



SNS COLLEGE OF TECHNOLOGY

(An Autonomous Institution)



Basics Elements of Electrical Drive

Presented by
M.Anand ,AP/MCT
SNS College of Technology



UNIT-2

Electrical Motors

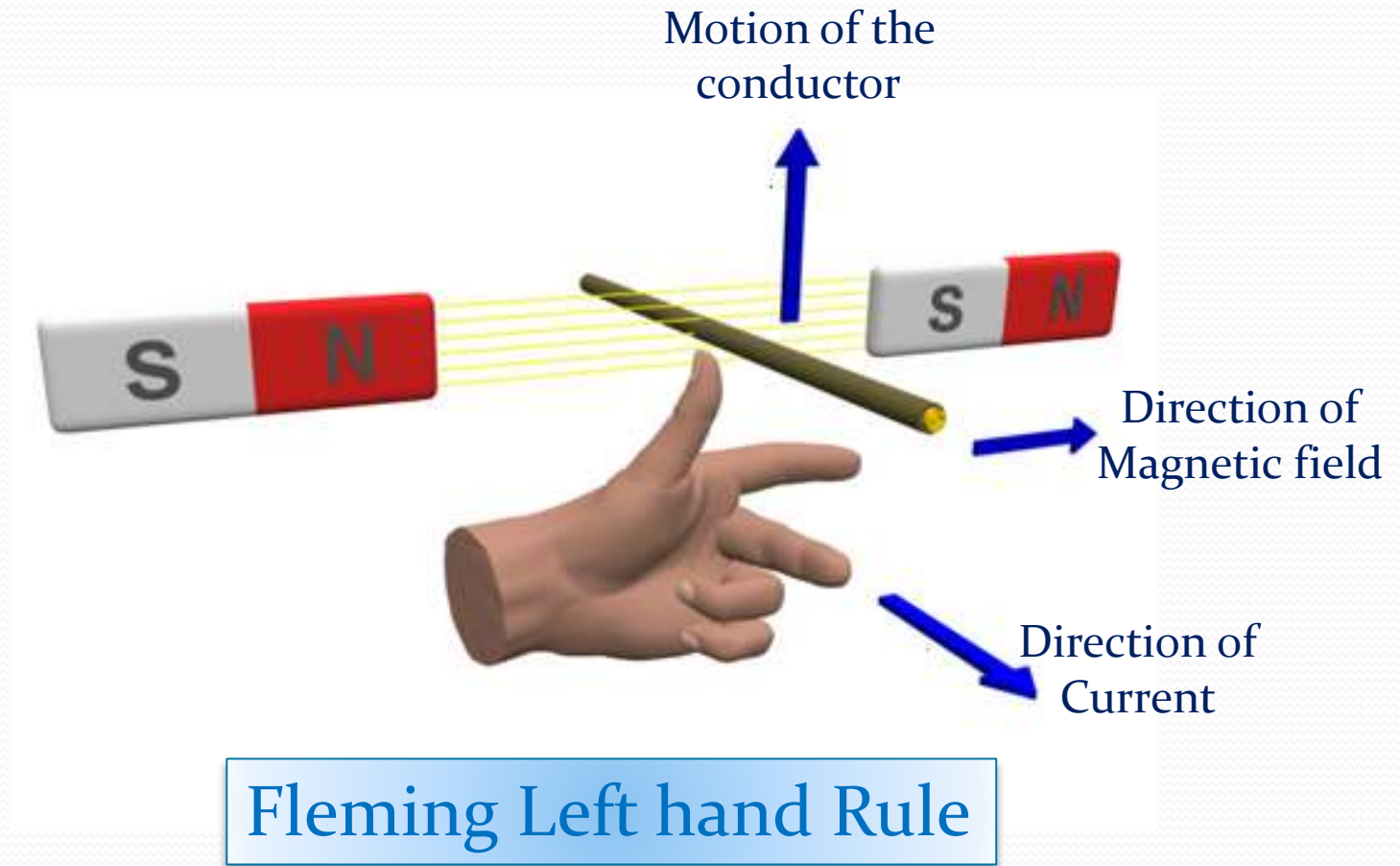


What is Motor.....?



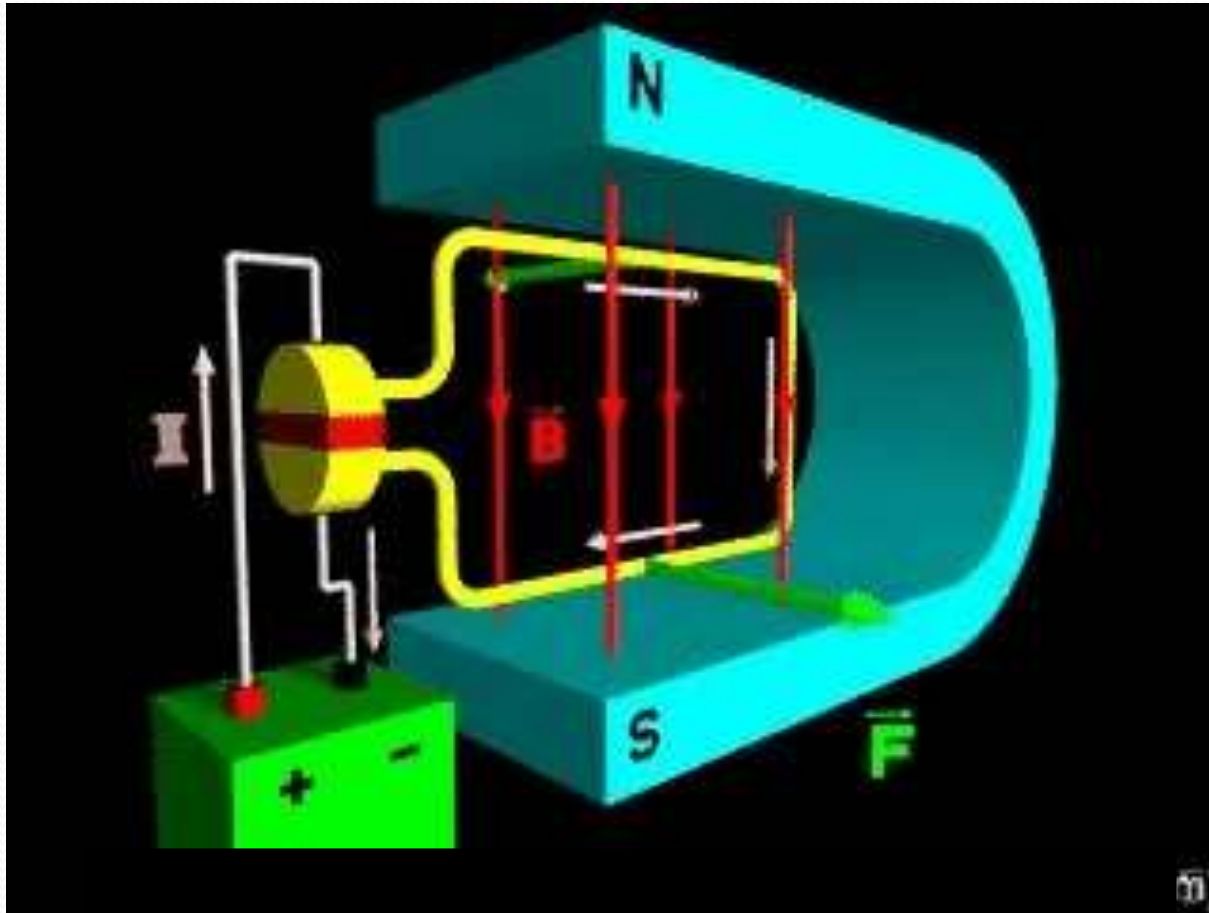


Working Principle of Motor





Fleming Left hand Rule





Types of Motor

AC Motor

DC Motor

Special Type Motor

Induction Motor

Synchronous Motor

Series Motor

Shunt Motor

Compound Motor

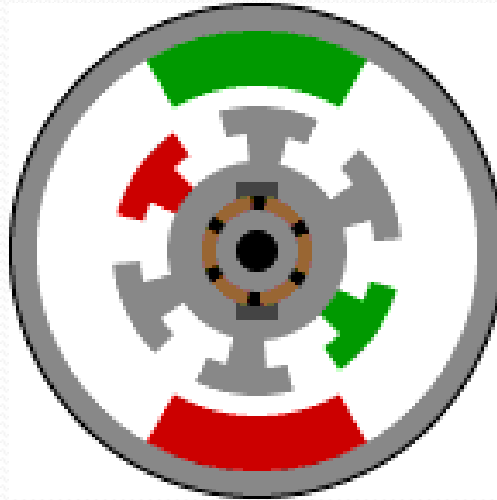
Stepper Motor

BLDC Motor

Universal Motor

Reluctance Motor

DC Motors



- The Field is the stationary outside part of a motor. The Armature is the inner part which rotates.
- Just as the rotor reaches alignment, the brushes move across the commutator contacts and energize the next winding
- The brushes of a dc motor have several limitations; brush life, brush residue, maximum speed, and electrical noise