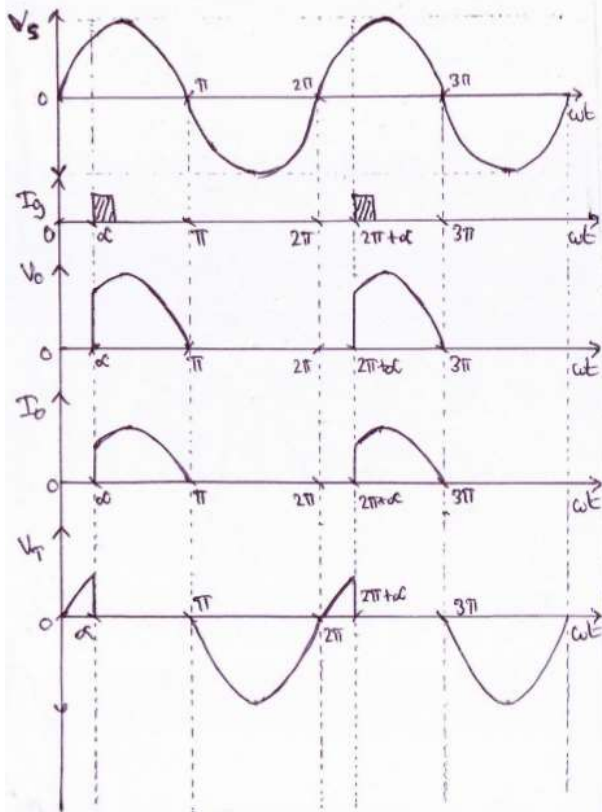
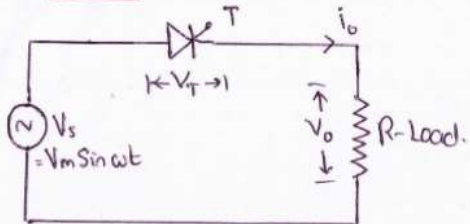
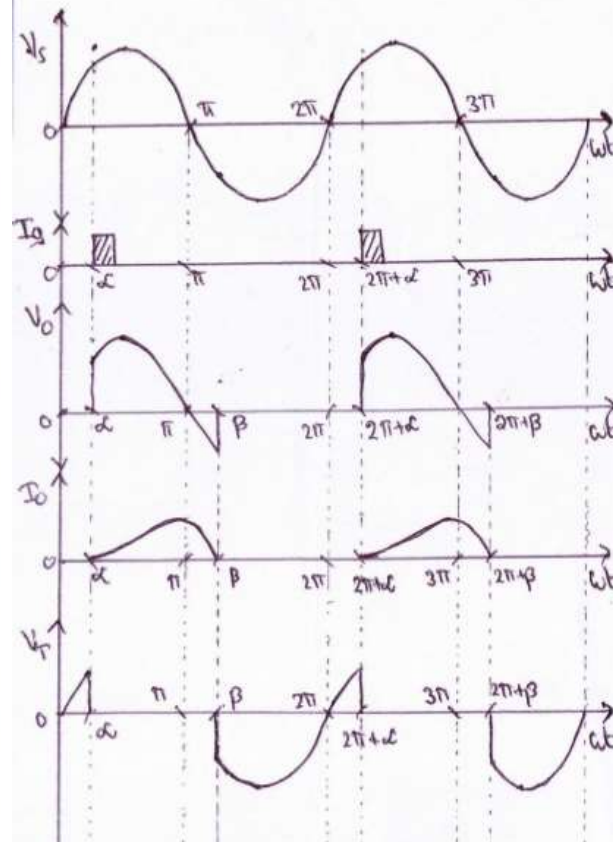
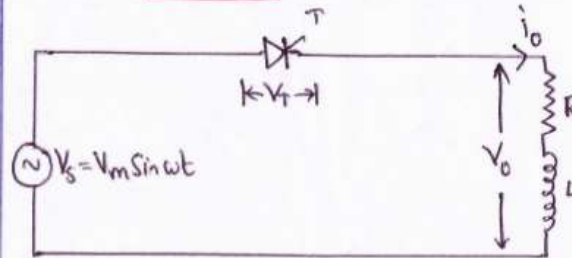


# Single Phase half wave controlled rectifier with R Load & RL Load

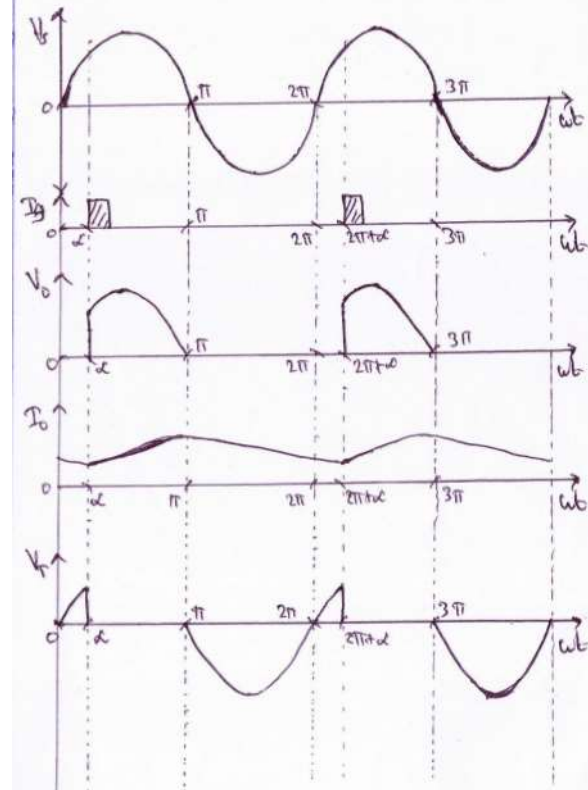
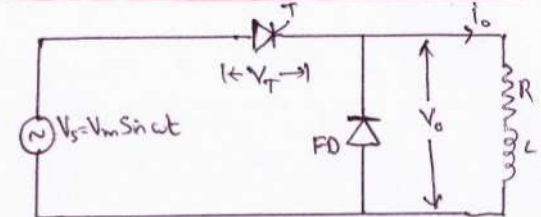
R-LOAD



RL-LOAD



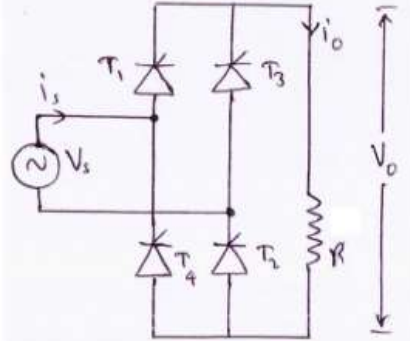
RL-LOAD WITH FREEWHEELING DIODE



## 1 $\phi$ full wave bridge converter

(fully controlled)

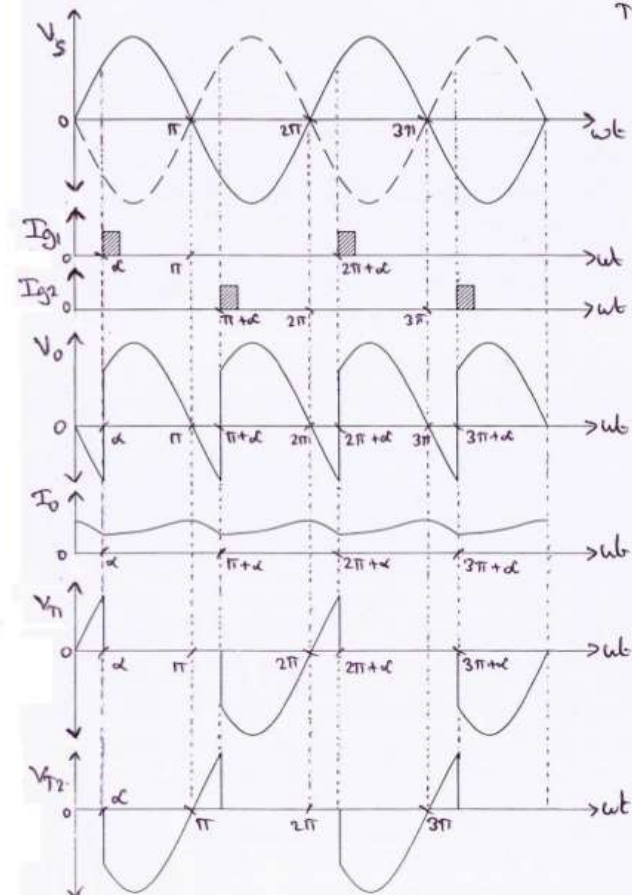
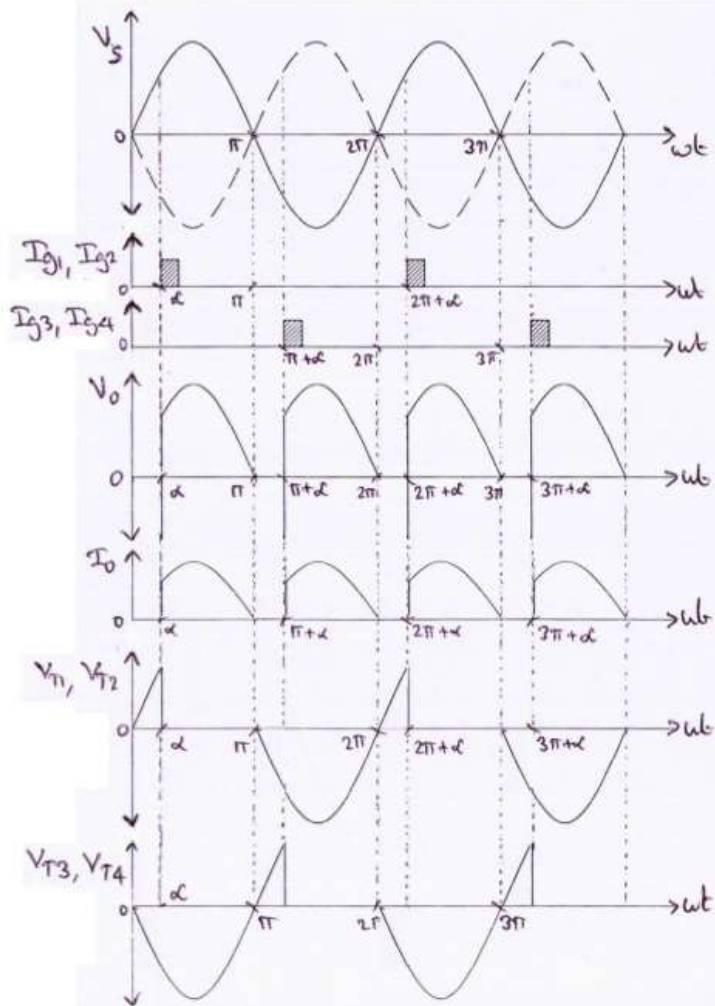
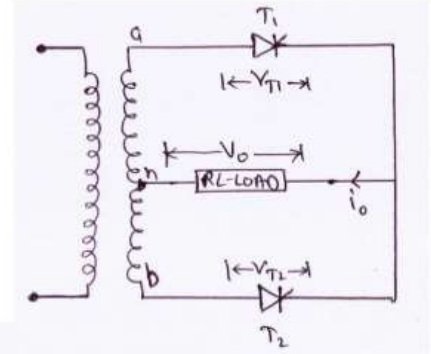
R - LOAD



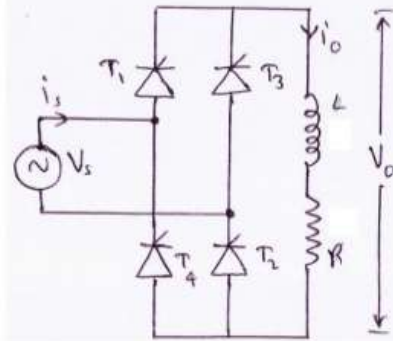
## Single Phase fully controlled rectifier with R Load & RL Load

### 1 $\phi$ full wave mid point converter

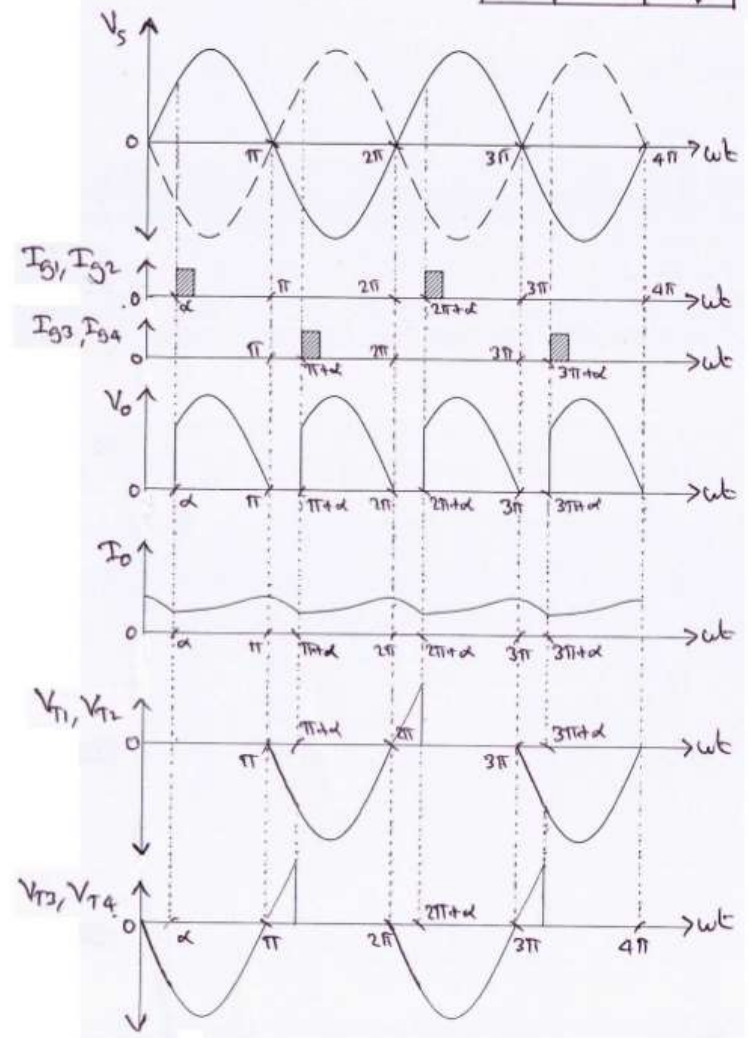
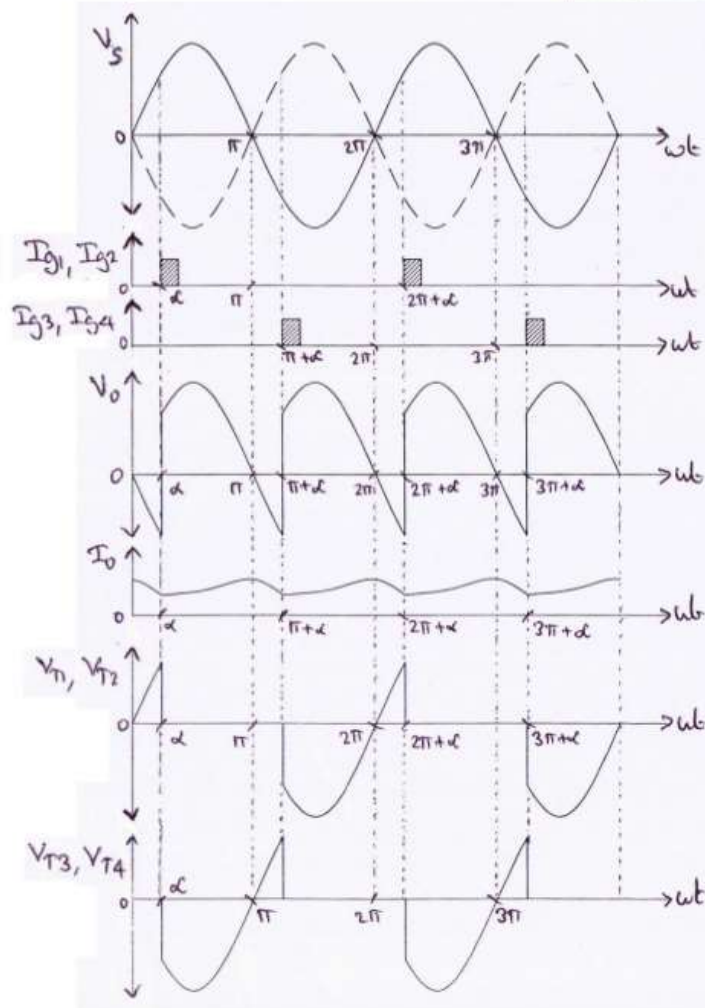
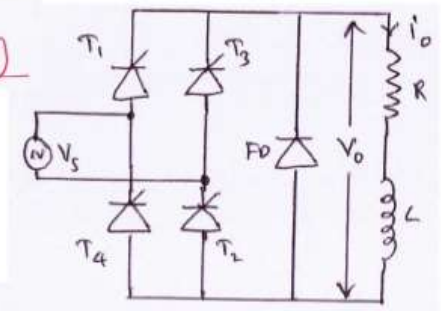
(M-2 connection)



1 $\phi$  full wave bridge converter  
(bully controlled)



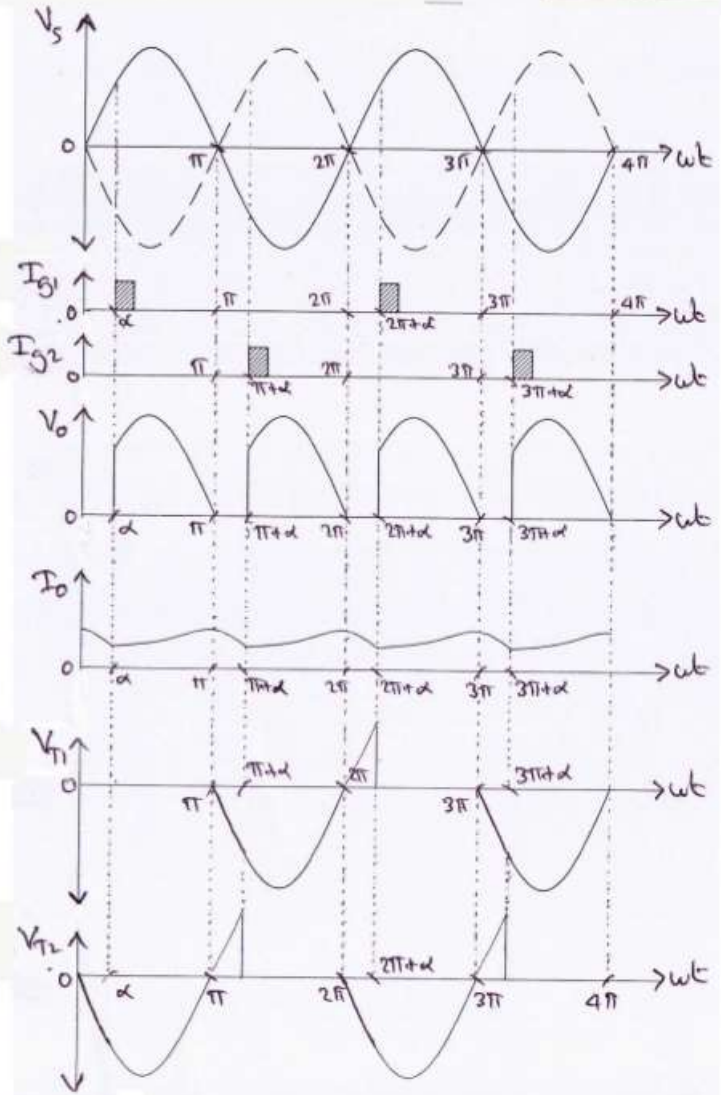
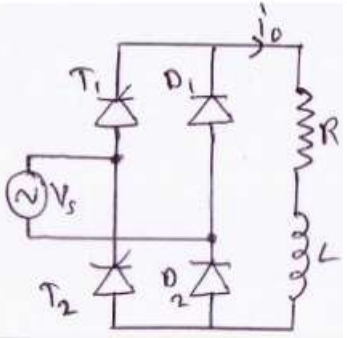
1 $\phi$  full wave bridge rectifier with  
freewheeling diode (bully controlled)



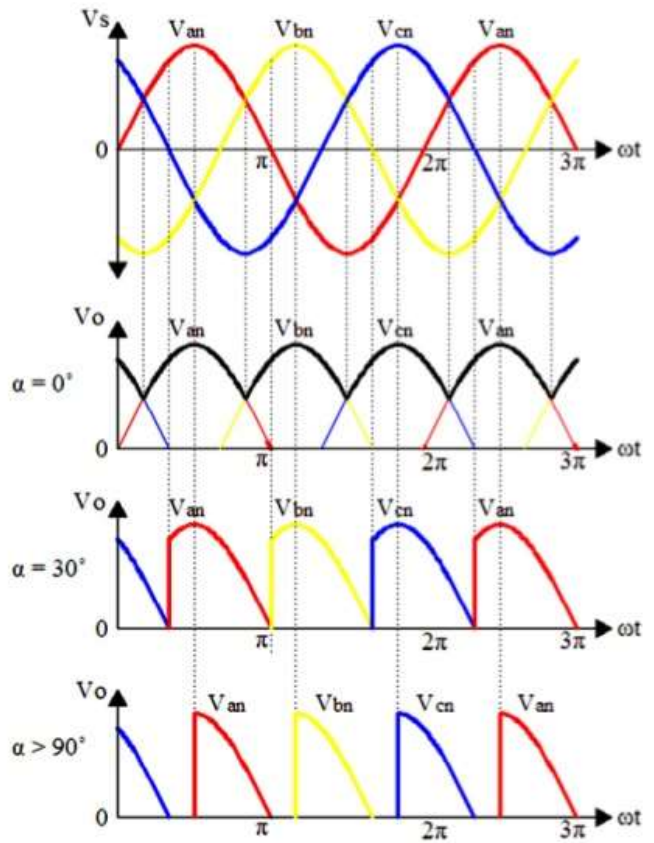
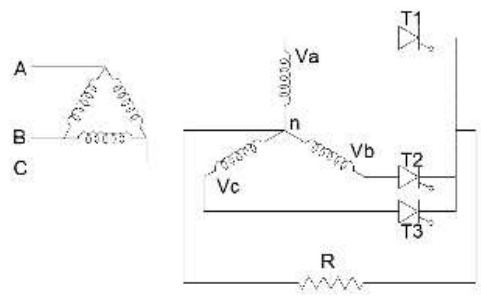


# 1 $\phi$ Semi converter (half controlled)

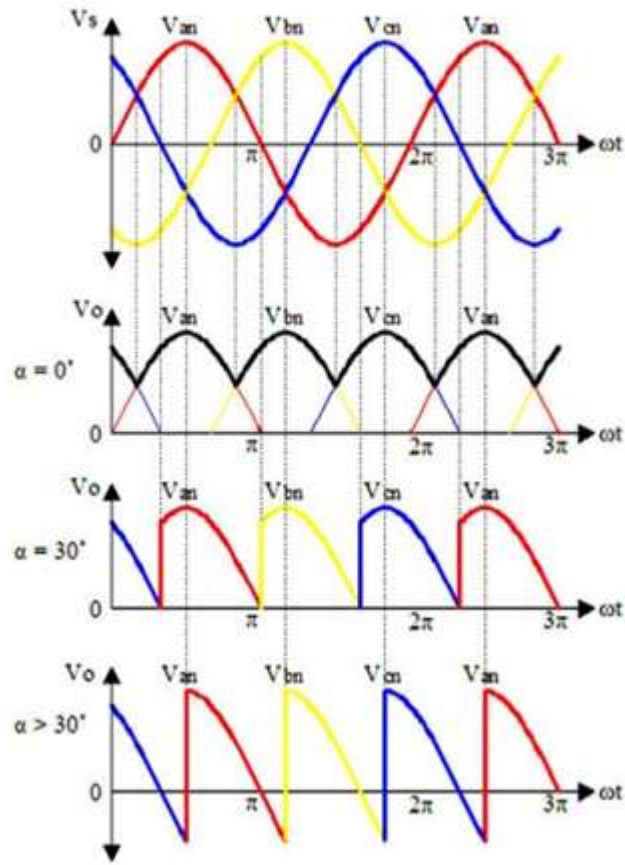
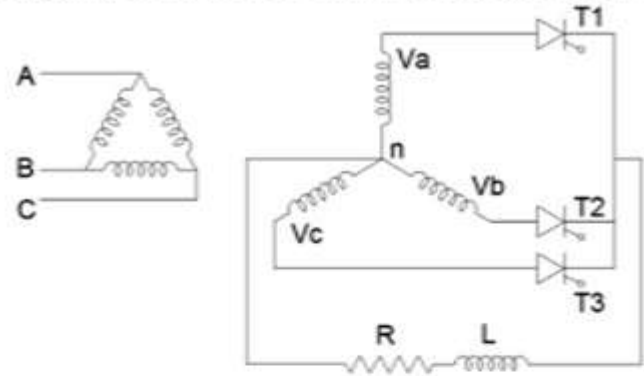
Symmetrical Semi converter



## Circuit Diagram and Waveform of 3 Phase Half Controlled Rectifier with R Load



Circuit Diagram and Waveform of 3 Phase Half Controlled Rectifier with RL Load



Circuit Diagram and Waveform of 3 Phase Full Controlled Rectifier with RL Load

