



# **SNS COLLEGE OF TECHNOLOGY**

## **(AN AUTONOMOUS INSTITUTION)**

Approved by AICTE & Affiliated to Anna University  
Accredited by NBA & Accredited by NAAC with 'A++' Grade,  
Recognized by UGC saravanampatti (post), Coimbatore-641035.

## **Department of Biomedical Engineering**

**Course Name: 19BMB304 & Biomedical Image Processing**

**III Year : VI Semester**

**Unit I – DIGITAL IMAGE FUNDAMENTALS**

**Topic : Digital Image Processing – Steps & Components**

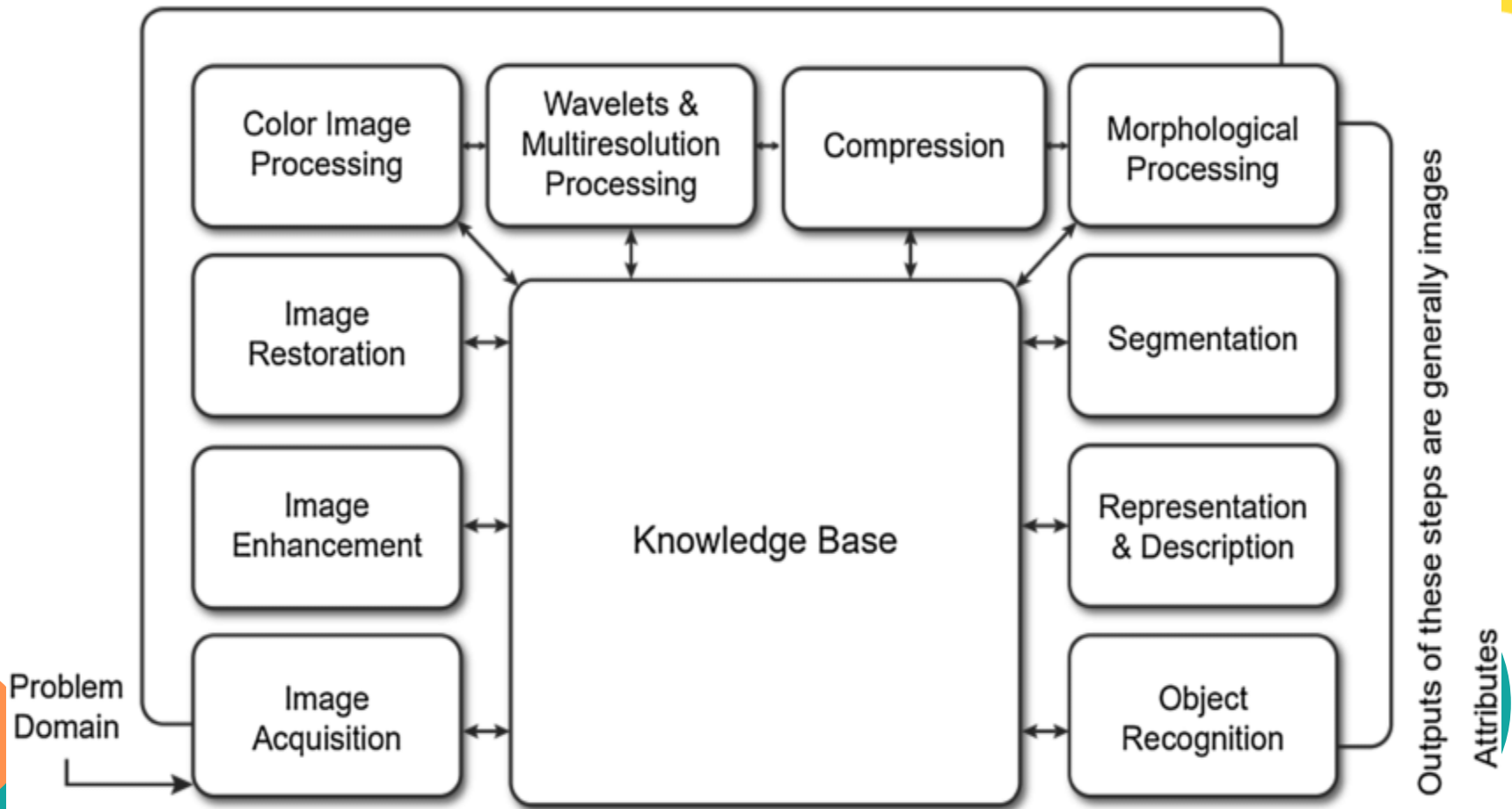


# Fundamental Steps in Digital Image Processing

- Methods whose input and output are images
- Methods whose outputs are attributes extracted from those images

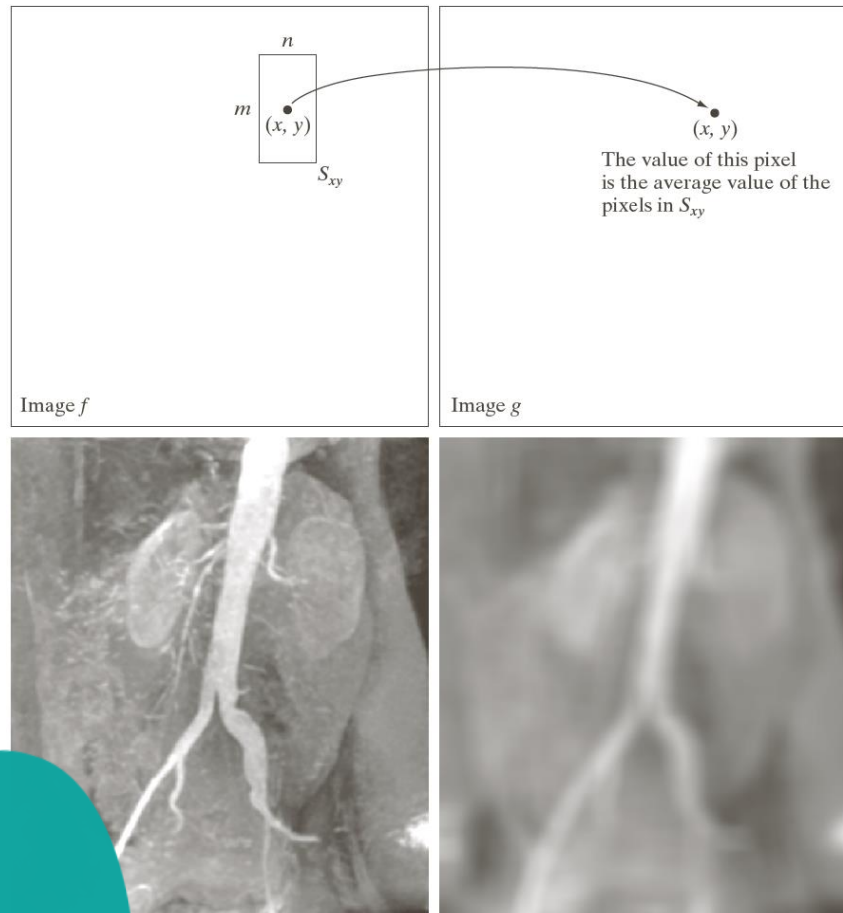


Outputs of these steps are generally images





# Image operations

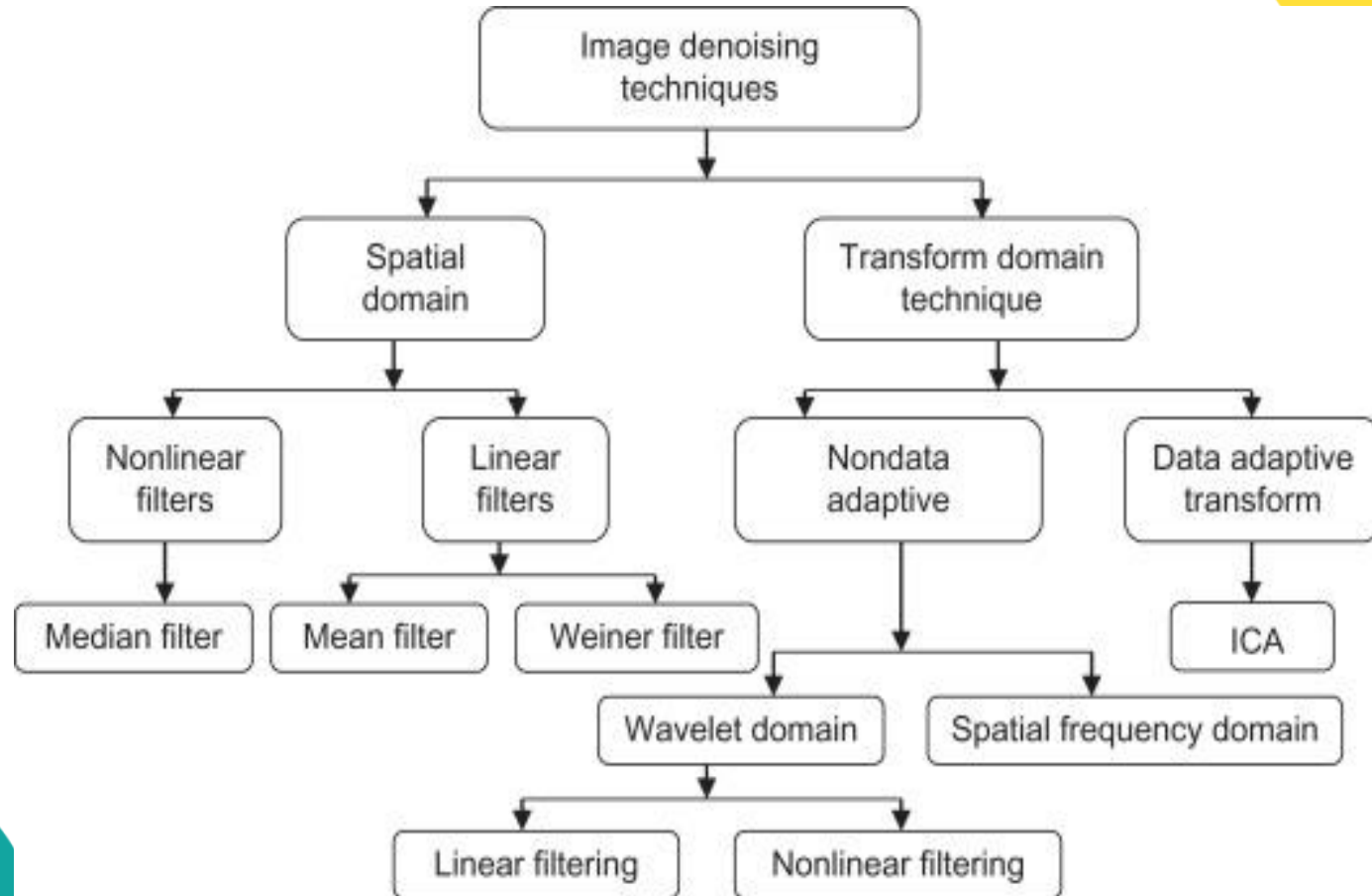


a	b
c	d

**FIGURE 2.35**  
Local averaging using neighborhood processing. The procedure is illustrated in (a) and (b) for a rectangular neighborhood. (c) The aortic angiogram discussed in Section 1.3.2. (d) The result of using Eq. (2.6-21) with  $m = n = 41$ . The images are of size  $790 \times 686$  pixels.

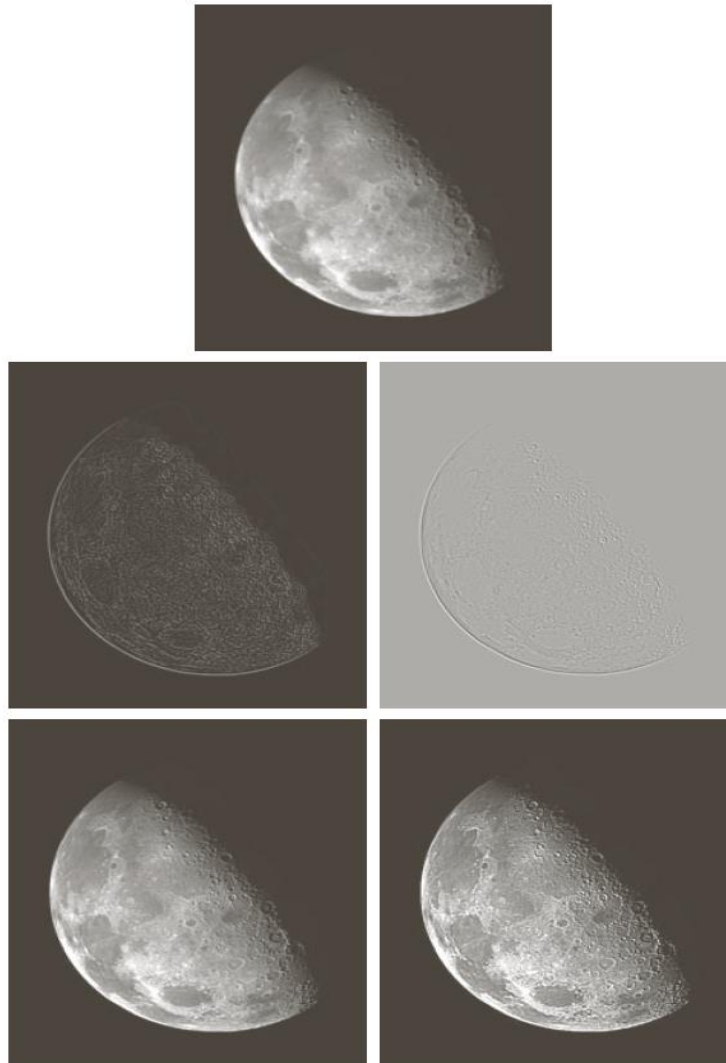


# Image operations





# Spatial filtering



a
b c
d e

**FIGURE 3.38**

(a) Blurred image of the North Pole of the moon.

(b) Laplacian without scaling.

(c) Laplacian with scaling.

(d) Image sharpened using the mask in Fig. 3.37(a).

(e) Result of using the mask in Fig. 3.37(b).

(Original image courtesy of NASA.)



- Filtering in the frequency domain

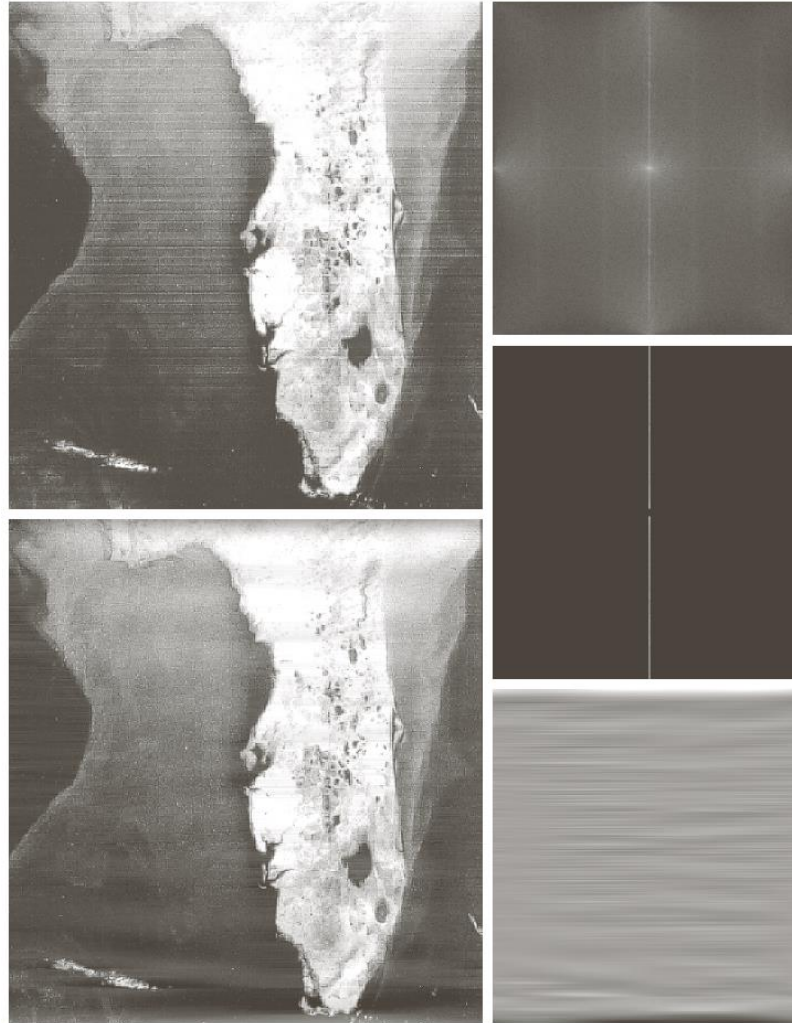


**FIGURE 4.48** (a) Original image. (b)–(f) Results of filtering using GLPFs with cutoff frequencies at the radii shown in Fig. 4.41. Compare with Figs. 4.42 and 4.45.





# Image restoration



a	b
c	d
e	

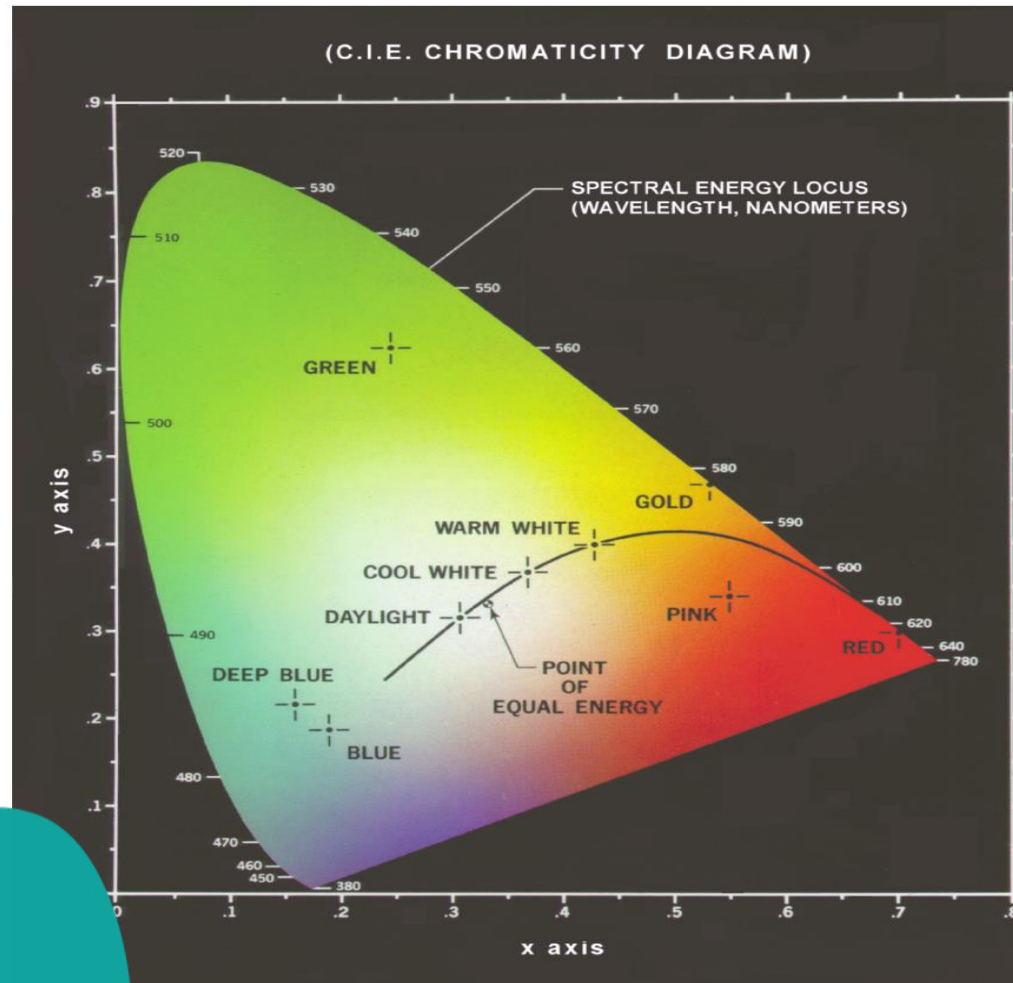
**FIGURE 5.19**

(a) Satellite image of Florida and the Gulf of Mexico showing horizontal scan lines. (b) Spectrum. (c) Notch pass filter superimposed on (b). (d) Spatial noise pattern. (e) Result of notch reject filtering. (Original image courtesy of NOAA.)





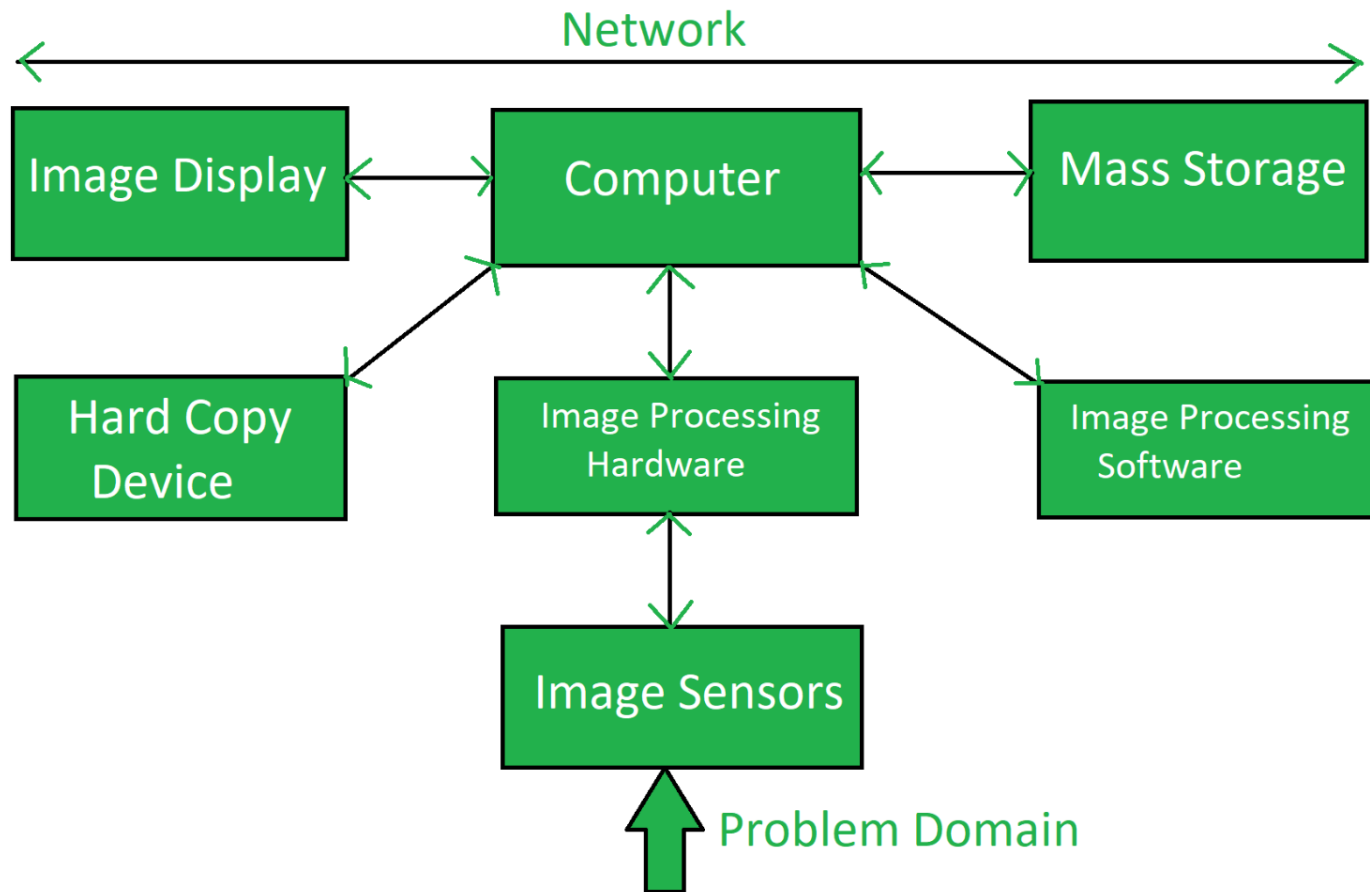
# Color image processing



**FIGURE 6.5**  
Chromaticity diagram.  
(Courtesy of the General Electric Co., Lamp Business Division.)



# Components of an Image Processing System





***Thank You***