



# **SNS COLLEGE OF TECHNOLOGY**

(An Autonomous Institution)

COIMBATORE-35

Accredited by NBA-AICTE and Accredited by NAAC – UGC with A+ + Grade

Approved by AICTE, New Delhi & Affiliated to Anna University, Chennai



## **19EEE305 / EMBEDDED SYSTEMS III YEAR / VI SEMESTER**

### **UNIT-I: INTRODUCTION TO EMBEDDED SYSTEMS**

## **INTRODUCTION – EMBEDDED SYSTEM**



## What we Study?

# UNIT I - INTRODUCTION TO EMBEDDED SYSTEMS

- Introduction to Embedded Systems
- The Build process for embedded systems
- Structural units in Embedded processor
- Selection of processor
- Selection of Memory devices



# What is an Embedded System Is???

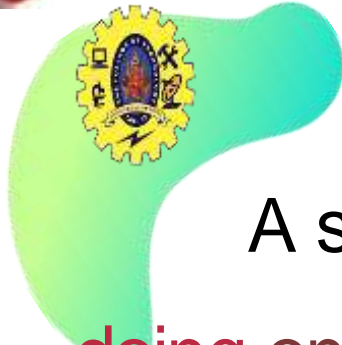


03.01.09

murugan\_m1@yahoo.com 996576



# System

A decorative graphic on the left side of the slide, consisting of a yellow gear with a blue center and a green, irregular shape behind it.

A system is a way of working, organizing or doing one or many tasks, which are performed in a system according to a fixed plan, program or set or rules



# *What is an Embedded System?*



*An embedded system is a system that has embedded software in a computer harborre. The system is dedicated for either an application(s) or specify: part of an application or product or a component of a large system*

*Eg.:*

Washing machine

Cooking machine

Automative chocolate vending machines

Multitasking toys



# Examples Embedded System





# INTRODUCTION TO EMBEDDED SYSTEMS



- DMA
- Memory management methods
- Timer and Counting devices
- Watchdog Timer
- Real Time Clock
- In circuit emulator
- Target Hardware Debugging



# Components in Embedded System



I J





# *General Computing System Components*

- *Microprocessor*
- *Large memory*
- *Input Units*
- *Output Units*
- *Networking Units*
- *An Operating System*

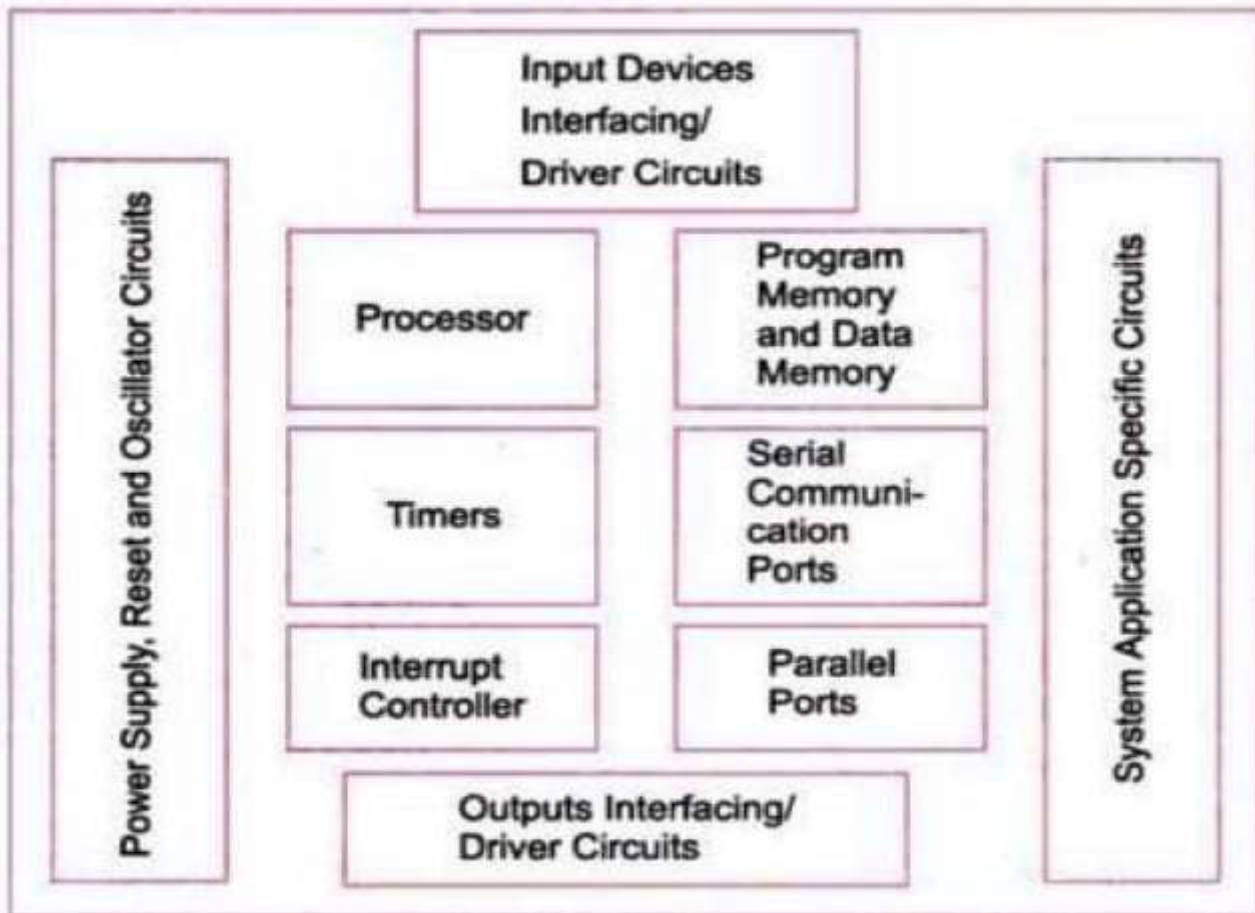
# *Classification of Embedded System*

- i. Small Scale Embedded Systems**
- ii. Medium Scale Embedded Systems**
- iii. Sophisticated Embedded Systems**

# Embedded System Components

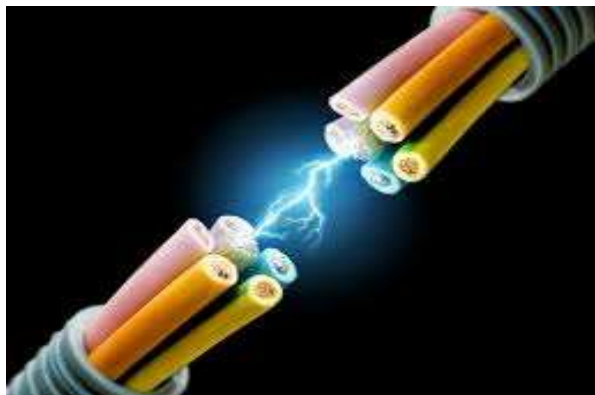
- It embeds *Hardware* similar to a computer
- *Software* usually embeds in the ROM, flash memory or media card
- It embeds a Real Time Operation System (RTOS)

# Embedded System Components





**RECAP....**



**...THANK YOU**

