



SNS COLLEGE OF TECHNOLOGY

(An Autonomous Institution)

COIMBATORE-35

Accredited by NBA-AICTE and Accredited by NAAC – UGC with A+ Grade

Approved by AICTE, New Delhi & Affiliated to Anna University, Chennai



ARTIFICIAL INTELLIGENCE UNIT 1-AI FUNDAMENTAL

TOPIC: INTRODUCTION TO HISTORY OF ARTIFICIAL INTELLIGENCE



TOPIC OUTLINE



History of AI?

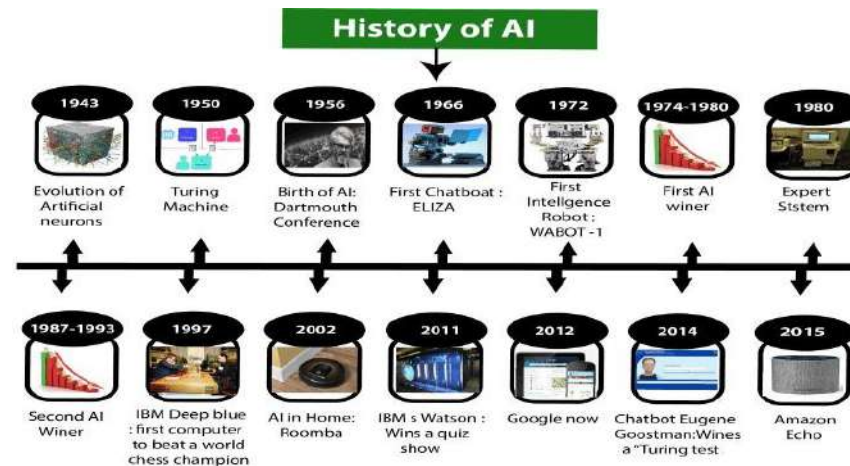
Introduction to artificial intelligence?

Advantages and Disadvantages of AI?



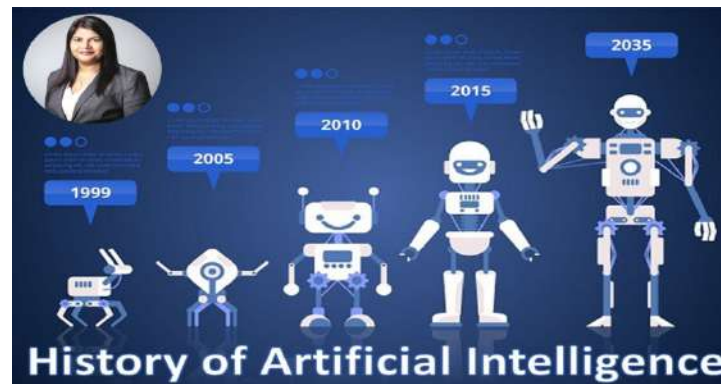
HISTORY OF ARTIFICIAL INTELLIGENCE

- In 1956 John McCarthy coined the term 'artificial intelligence' and had the first AI conference.
- In 1969 Shakey was the first general-purpose mobile robot built. It is now able to do things with a purpose vs. just a list of instructions





- The earliest substantial work in the field of artificial intelligence was done in the mid-20th century by the British logician and computer pioneer Alan Mathison Turing.
- The first work which is now recognized as AI was done by Warren McCulloch and Walter Pitts in 1943. They proposed a model of artificial neurons.



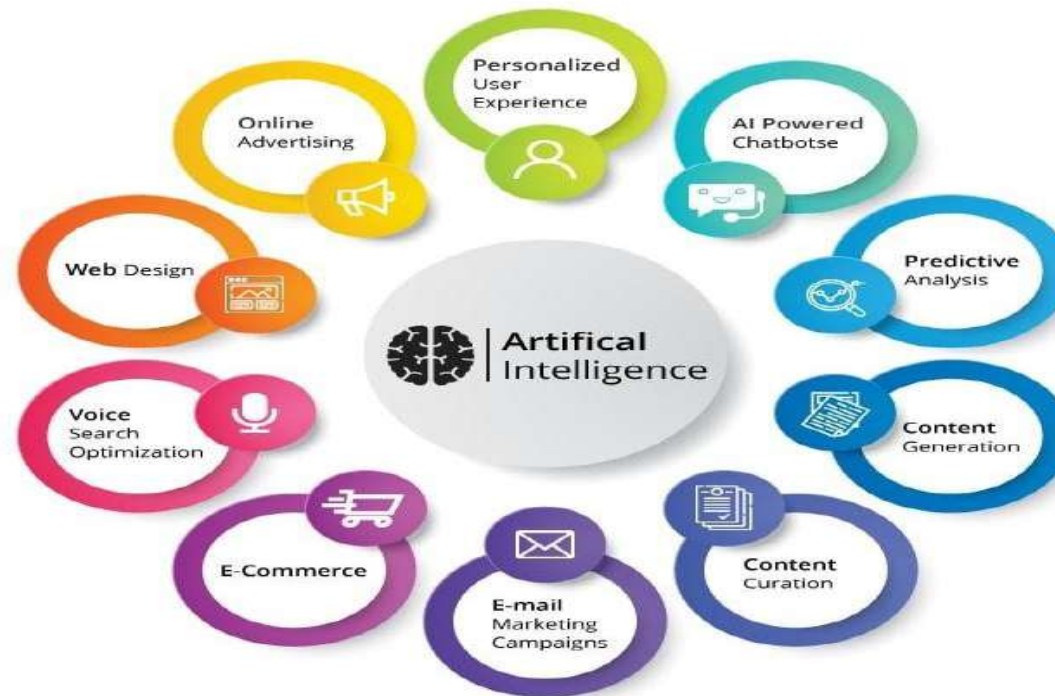


INTRODUCTION OF ARTIFICIAL INTELLIGENCE

- Artificial intelligence (AI) is the ability of machines to replicate or enhance human intellect, such as reasoning and learning from experience.
- Artificial intelligence has been used in computer programs for years, but it is now applied to many other products and services.
- For example, some digital cameras can determine what objects are present in an image using artificial intelligence software.
- In addition, experts predict many more innovative uses for artificial intelligence in the future, including smart electric grids.



ARCHITECHTURE OF AI





APPLICATIONS OF AI



What Are the Applications of Artificial Intelligence?

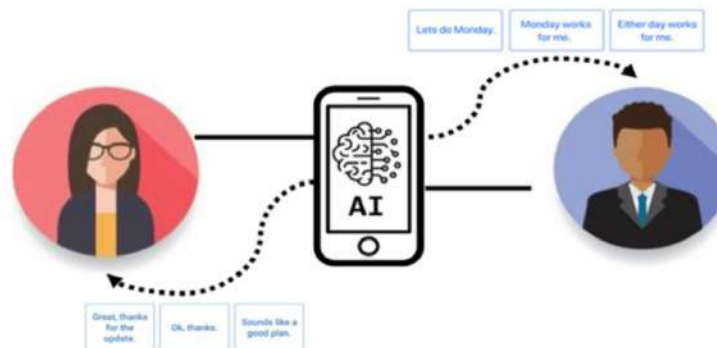
- **Personalized Shopping**
- **AI-powered Assistant**
- **Fraud Prevention**
- **Administrative Tasks Automated to Aid Educators**
- **Creating Smart Content**
- **Voice Assistants**
- **Personalized Learning**
- **Autonomous Vehicles etc.....**



ARTIFICIAL INTELLIGENCE IN COMMUNICATION



- Artificial intelligence is not ready to communicate with us at the same level yet. Nor is it prepared to replace translators and interpreters.
- It's hard to predict if it ever will be. However, AI can assist us with natural language processing (NLP) systems



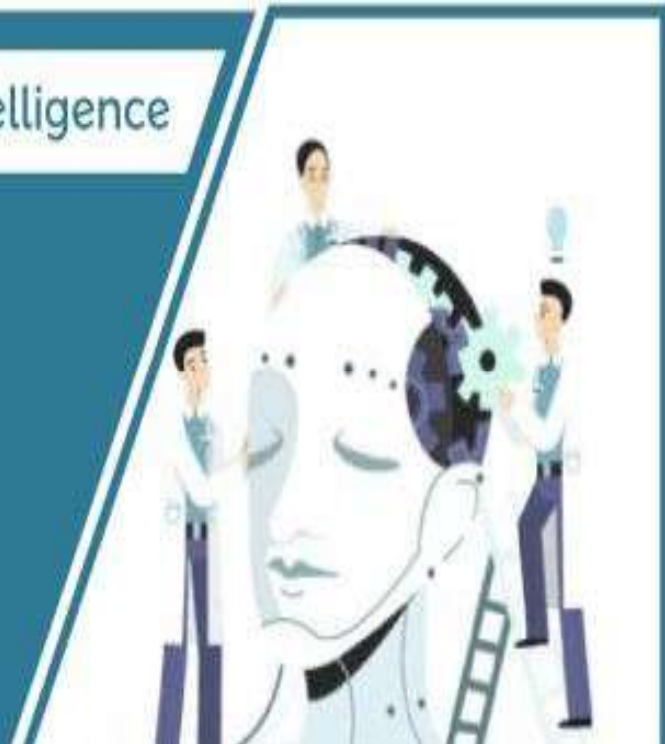


ADVANTAGES OF AI



Advantages of Artificial Intelligence

- Reduction in Human Error-
- Reduce the Risk (Zero Risk)
- 24/7 Support-
- Perform Repetitive Jobs
- Faster decision
- New Inventions
- Digital Assistance





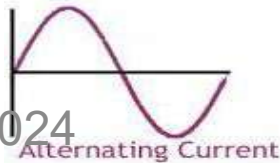
DISADVANTAGES OF AI

Disadvantages of Artificial Intelligence

- High production cost
- Risk of Unemployment
- Increasing human's laziness
- Emotionless
- Lack of creativity



8/15/2024



1999001 AAF000ELECTRICAL ENGINEERING/CSHUB/WI/APP/BEE



8/15/2024

19EE4001 / APPLIED ELECTRICAL ENGINEERING / SEM I / XI / EEE

11/11