



# **SNS COLLEGE OF TECHNOLOGY**

**(An Autonomous Institution)**



**COIMBATORE-35**

**Accredited by NBA-AICTE and Accredited by NAAC – UGC with A+ Grade  
Approved by AICTE, New Delhi & Affiliated to Anna University, Chennai**

**DEPARTMENT OF ELECTRICAL AND ELECTRONICS ENGINEERING**

**COURSE NAME: 24EET204/ ELECTRICAL MACHINES II**

**II YEAR / IV SEMESTER**

**Unit 3 – THREE PHASE INDUCTION MOTOR**

**Topic 5: Equivalent Circuit**





## Equivalent Circuit of an Induction Motor

The Equivalent Circuit of an Induction motor enables the performance characteristics which are evaluated for steady-state conditions. An induction motor is based on the principle of induction of voltages and currents. The voltage and current are induced in the rotor circuit from the stator circuit for the operation. The equivalent circuit of an induction motor is similar to that of the transformer.

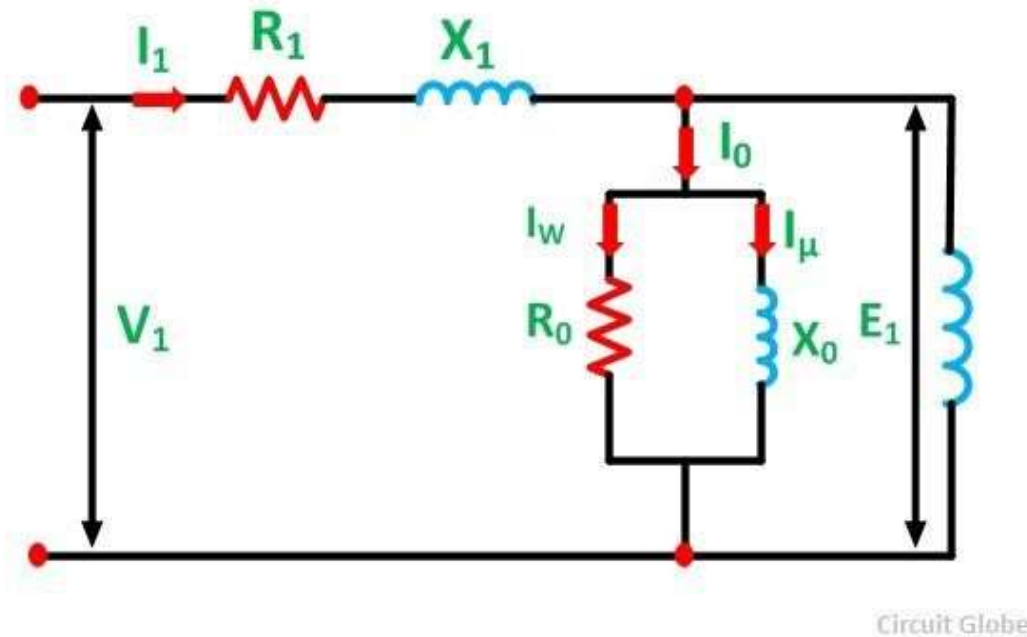




# Equivalent Circuit

## Stator Circuit Model

The stator circuit model of an induction motor consists of a stator phase winding resistance  $R_1$ , stator phase winding leakage reactance  $X_1$  as shown in the circuit diagram below:



The no-load current  $I_0$  is simulated by a pure inductive reactor  $X_0$  taking the magnetizing component  $I_\mu$  and a non-inductive resistor  $R_0$  carrying

$$I_0 = I_\mu + I_\omega \dots \dots \dots (1)$$

the core loss current  $I_\omega$ . Thus,

The total magnetizing current  $I_0$  is considerably larger in the case of the induction motor as compared to that of a transformer. This is because of the higher reluctance caused by the air gap of the induction motor. As we know that, in a transformer, the no-load current varies from **2 to 5%** of the rated current, whereas in an induction motor the no-load current is about **25 to 40%** of the rated current depending upon the size of the motor. The







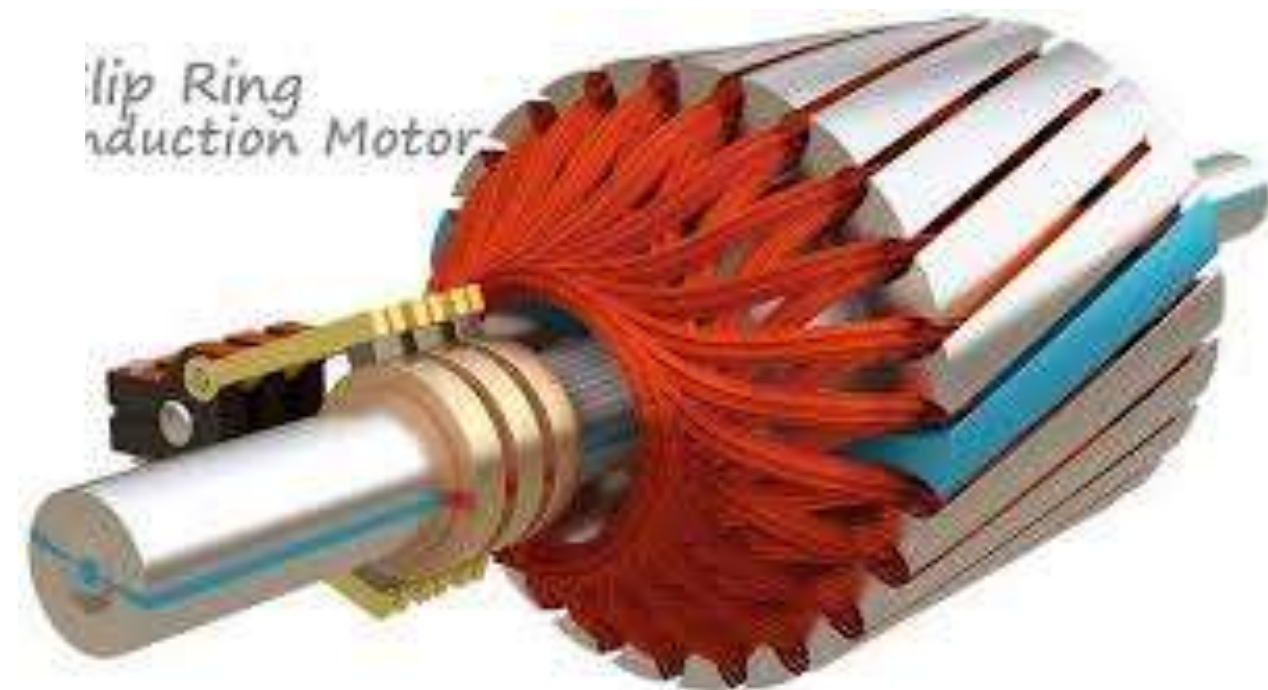
# Equivalent Circuit

## Rotor Circuit Model

When a three phase supply is applied to the stator windings, a voltage is induced in the rotor windings of the machine. The greater will be the relative motion of the rotor and the stator magnetic fields, the greater will be the resulting rotor voltage. The largest relative motion occurs at the standstill condition. This condition is also known as the locked rotor or blocked rotor condition. If the induced rotor voltage at this condition is  $E_{20}$  then the induced voltage at any slip is given by the equation shown

below:  $E_{2s} = sE_{20} \dots \dots \dots (2)$

The rotor resistance is constant and is independent of the slip. The reactance of the induction motor depends upon the inductance of the rotor and the frequency of the voltage and current in the rotor.







# Equivalent Circuit

If  $L_2$  is the inductance of the rotor, the rotor reactance is given by the equation shown below:

$$X_2 = 2\pi f_2 L_2$$

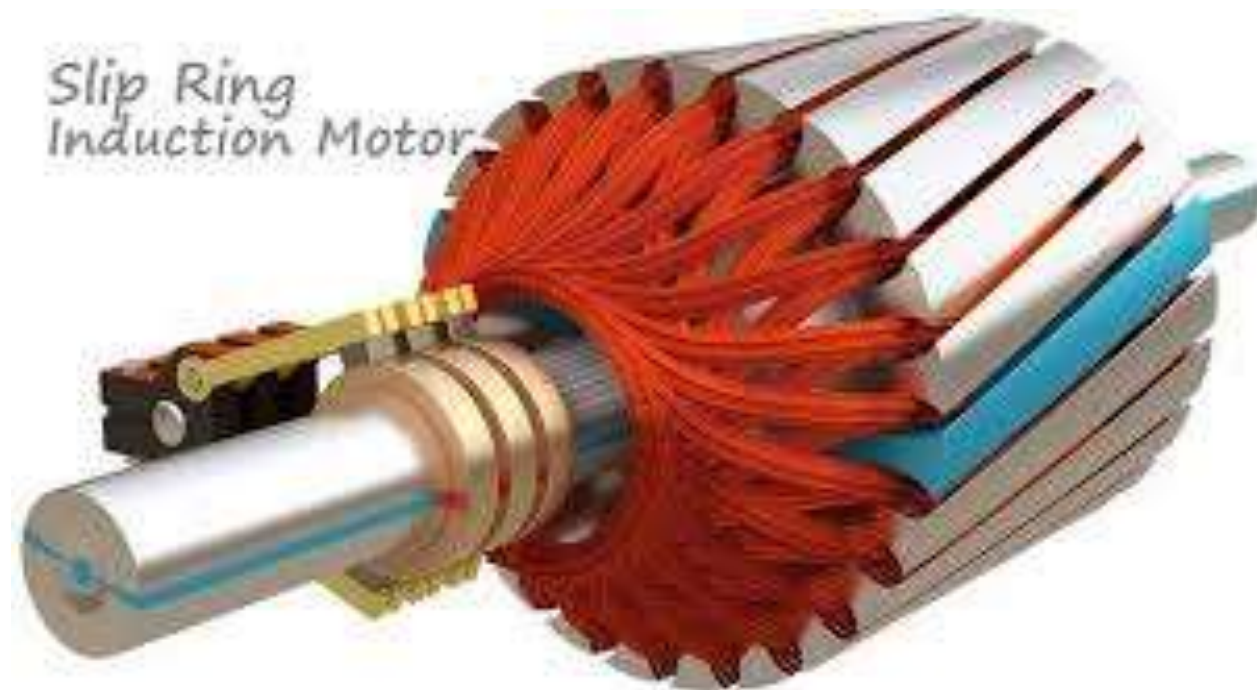
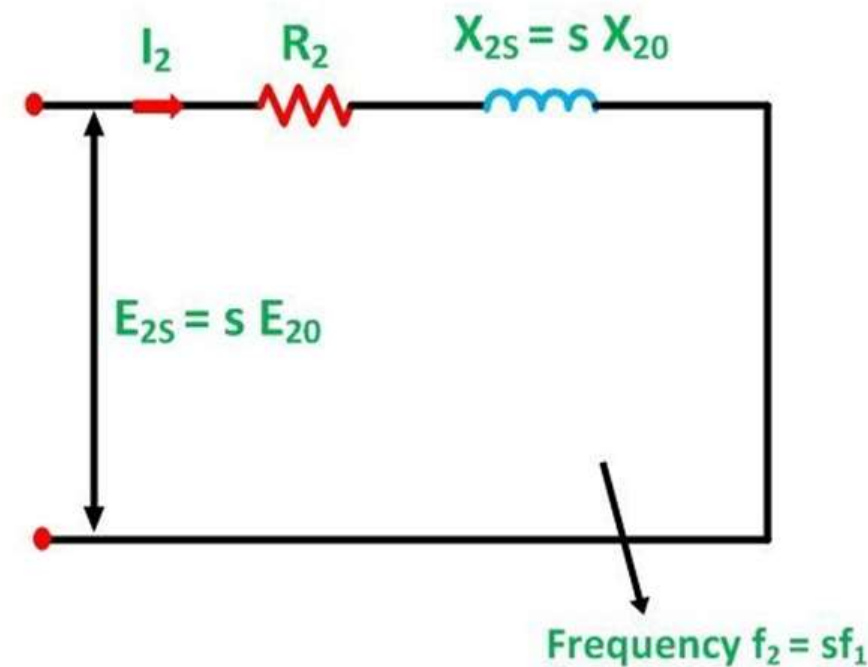
But, as we know,  $f_2 = sf_1$

$$X_2 = 2\pi sf_1 L_2 = s (2\pi f_1 L_2) \quad \text{or}$$

Therefore,  $X_2 = sX_{20} \dots \dots \dots (3)$

Where  $X_{20}$  is the standstill reactance of the rotor.

The rotor circuit is shown below:



Slip Ring Induction Motor





# Equivalent Circuit

The rotor impedance is given by the equation below:

$$Z_{2s} = R_2 + jX_{2s} \quad \text{or}$$

$$Z_{2s} = R_2 + jsX_{20} \dots \dots \dots (4)$$

The rotor current per phase is given by the equation shown below:

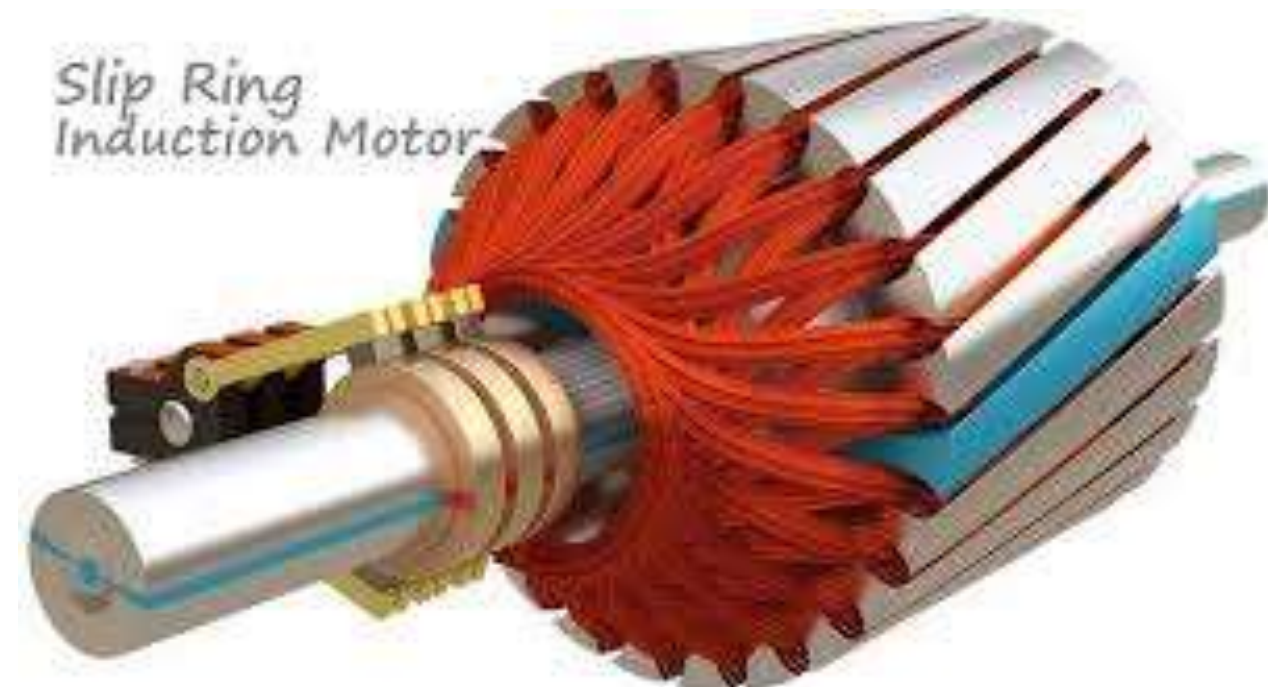
$$I_{2s} = \frac{E_{2s}}{Z_{2s}}$$

$$I_{2s} = \frac{sE_{20}}{R_2 + jsX_{20}} \dots \dots \dots (5)$$

Here,  $I_2$  is the slip frequency current produced by a slip frequency induced voltage  $sE_{20}$  acting in the rotor circuit having an impedance per phase of  $(R_2 + jsX_{20})$ .

Now, dividing the equation (5) by slip  $s$  we get the following equation:

$$I_{2s} = \frac{E_{20}}{\frac{R_2}{s} + jX_{20}} \dots \dots \dots (6)$$







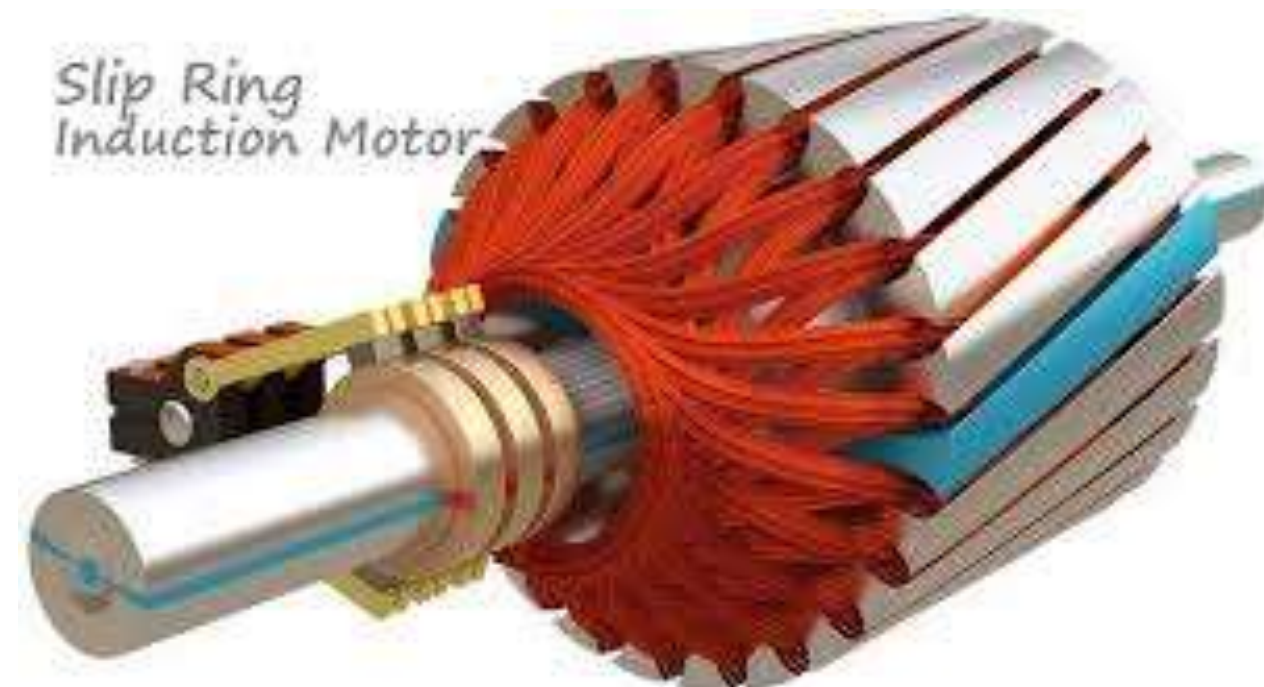
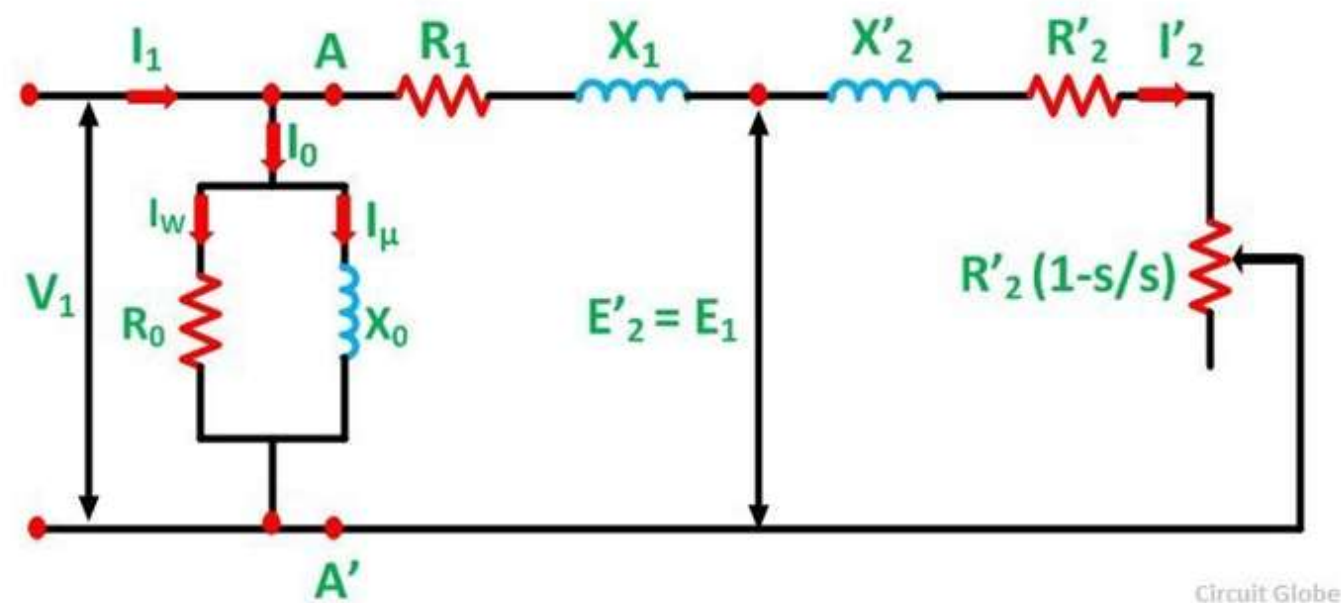
# Equivalent Circuit

The  $R_2$  is a constant resistance and a variable leakage reactance  $sX_2$ . Similarly, the rotor circuit shown below has a constant leakage reactance  $X_2$  and a variable resistance  $R_2/s$ .

Equation (6) above explains the secondary circuit of an imaginary transformer, with a constant voltage ratio and with the same frequency of both sides. This imaginary stationary rotor carries the same current as of the actual rotating rotor. This makes it possible to transfer the secondary rotor impedance to the primary stator side.

Approximate Equivalent Circuit of an Induction Motor

The equivalent circuit is further simplified by shifting the shunt impedance branches  $R_0$  and  $X_0$  to the input terminals as shown in the circuit diagram below:



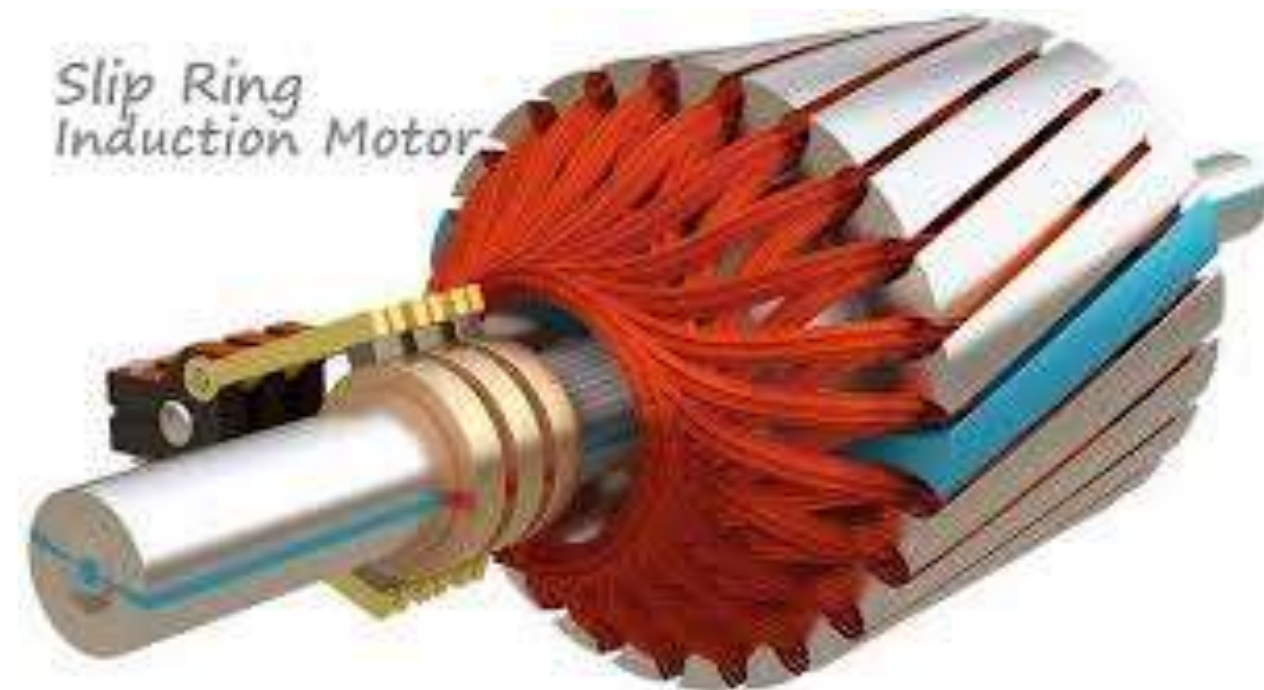




# Equivalent Circuit

The approximate circuit is based on the assumption that  $V_1 = E_1 = E'_2$ . In the above circuit, the only component that depends on the slip is the resistance. All the other quantities are constant. The following equations can be written at any given slip  $s$  is as follows:

The approximate circuit is based on the assumption that  $V_1 = E_1 = E'_2$ . In the above circuit, the only component that depends on the slip is the resistance. All the other quantities are constant. The following equations can be written at any given slip  $s$  is as follows:







# Equivalent Circuit

Impedance beyond AA' is given as:

$$Z_{AA'} = \left( R_1 + \frac{R'_2}{s} \right) + j(X_1 + X'_2) \dots \dots \dots (7)$$

$$I'_2 = \frac{V_1}{Z_{AA'}} \dots \dots \dots (8)$$

Putting the value of ZAA' from the equation (7) in equation (8) we get,

$$I'_2 = \frac{V_1}{\left( R_1 + \frac{R'_2}{s} \right) + j(X_1 + X'_2)} \dots \dots \dots (9)$$

$$I'_2 = |I'_2| \frac{V_1}{\sqrt{\left( R_1 + \frac{R'_2}{s} \right)^2 + (X_1 + X'_2)^2}} \dots \dots \dots (10)$$

Hence,

$$I'_2 = I'_2 \cos \phi_2 - j I'_2 \sin \phi_2 \dots \dots \dots (11)$$

Where,

$$\tan \phi_2 = \frac{X_1 + X'_2}{R_1 + \frac{R'_2}{s}} \dots \dots \dots (12) \text{ and}$$

$$\cos \phi_2 = \frac{R_1 + (R'_2/s)}{|Z_{AA'}|} \dots \dots \dots (13)$$

Therefore,

$$I_0 = I_\mu + I_\omega$$

$$I_0 = \frac{V_1}{R_0} + \frac{V_1}{jX_0}$$

$$I_0 = V_1 \left( \frac{1}{R_0} - j \frac{1}{X_0} \right) \dots \dots \dots (14)$$

No-load current  $I_0$  is

The total stator current is given by the equation shown below:

$$I_1 = I'_2 + I_0$$

Total core losses are given by the equation shown below:

$$P_{h+e} = 3V_1 I_0 \cos \phi_0 \dots \dots \dots (15)$$

$$\text{Stator input} = 3V_1 I_1 \cos \phi_1$$

$$\text{Stator input} = 3V_1 I'_2 \cos \phi_2 + P_{h+e}$$

$$\text{Stator input} = 3 I'^2_2 \left( R_1 + \frac{R'_2}{s} \right) + P_{h+e}$$

The air gap power per phase is given as:

$$P_g = V_1 I'_2 \cos \phi_2 = I'^2_2 \frac{R'_2}{s} = \frac{V_1^2 (R'_2/s)}{\left( R_1 + \frac{R'_2}{s} \right)^2 + (X_1 + X'_2)^2}$$

The

developed torque is given by the equation shown below:

$$T_d = \frac{P_g}{\omega_s} \text{ or}$$

$$T_d = \frac{V_1^2 (R'_2/s)}{\omega_s \left[ \left( R_1 + \frac{R'_2}{s} \right)^2 + (X_1 + X'_2)^2 \right]} \dots \dots \dots (16)$$

The above equation is the torque equation of an induction motor. The approximate equivalent circuit model is the standard for all performance calculations of an induction motor.



KEEP  
LEARNING..  
**Thank u**

SEE YOU IN NEXT CLASS