



BI

Guess
the
TOPIC...??

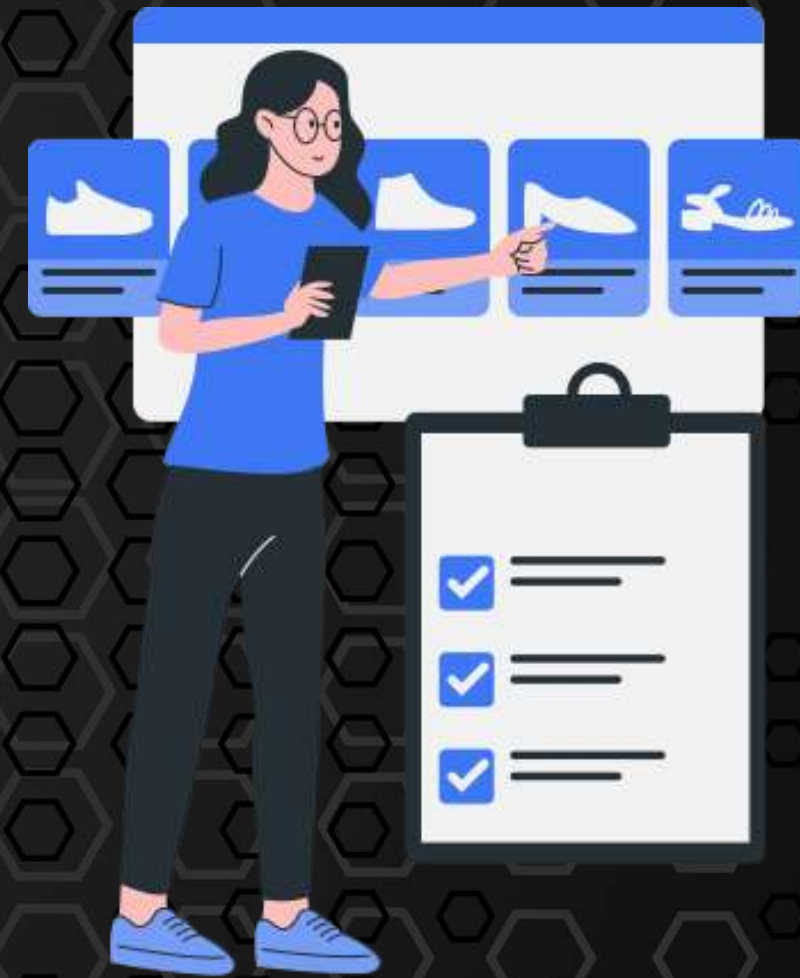




Table of contents

- Introduction
- History of Business Intelligence
- Evolution of BI
- The Role of BI in Modern Businesses
- BI's Impact on Business Strategy
- The Architecture of BI
- Knowledge Check



Introduction

- **Comprehensive term:** Encompasses architectures, tools, databases, analytics, applications, and methodologies
- **Core objective:** Enables interactive, real-time access to data for manipulation and analysis.
- **Decision support:** Provides valuable insights by analyzing historical and current data, situations, and performance.
- **Action-oriented:** Transforms data into information, leading to informed decisions and subsequent actions.



History of Business Intelligence

01

**Early Beginnings
(Pre-1960s)**

02

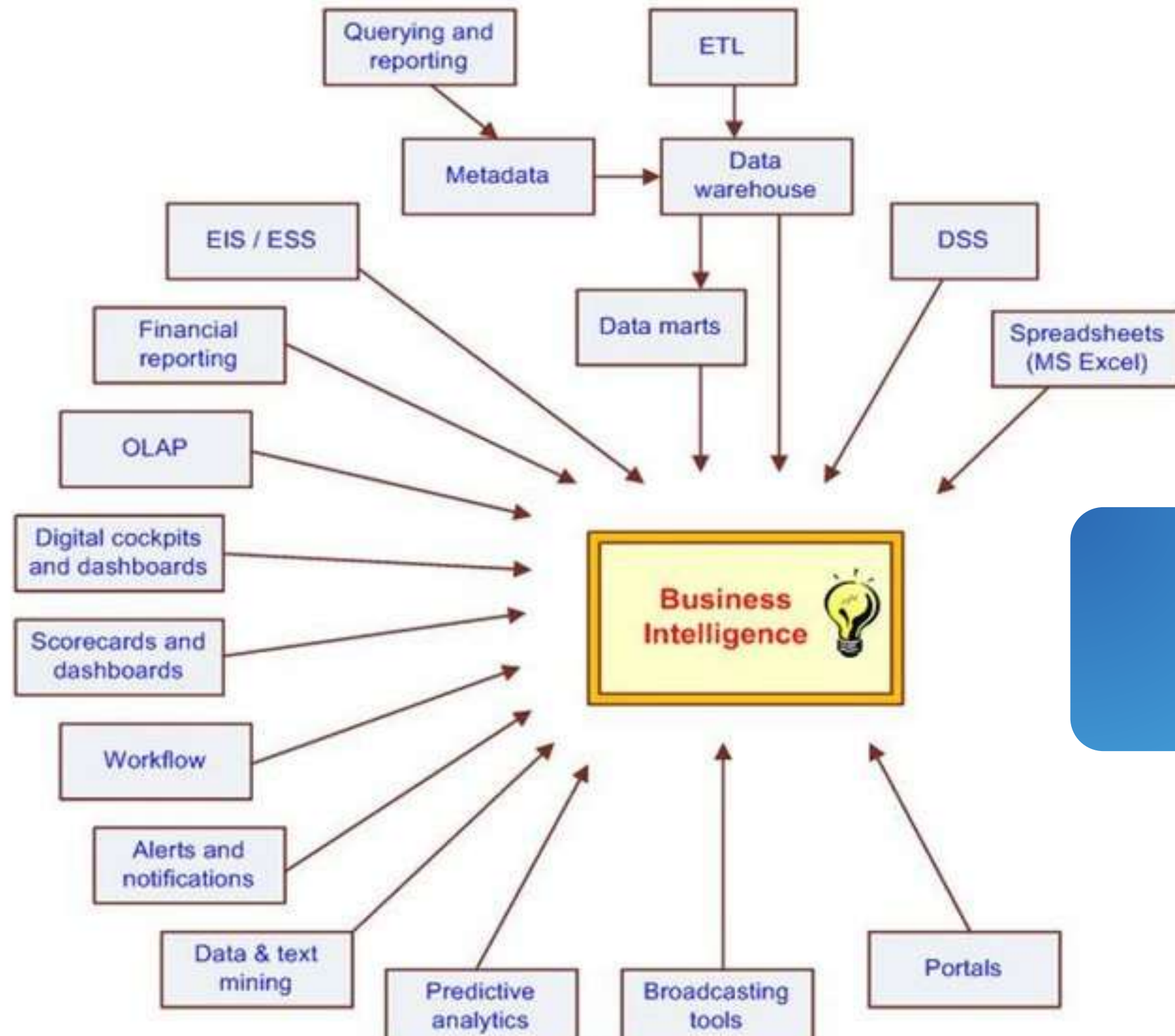
**1960s & 1970s:
Rise of Data Warehousing**

03

**1980s & 1990s:
The Age of OLAP
and Self-Service
BI**

04

**2000s & Beyond:
The Era of Big
Data and Cloud
BI**



EVOLUTION OF BUSINESS INTELLIGENCE



BI's Impact on Modern Business

Operational Efficiency



- Streamline processes
- Optimize resource allocation
- Predictive maintenance

Customer Insights



- Understand customer behavior
- Personalize marketing
- Enhance customer satisfaction

Risk Management



- Identify potential threats
- Develop mitigation strategies
- Monitor KPIs

Strategic Decision-Making



- Data-driven insights
- Support strategic planning
- Inform resource allocation



BI's Impact on Business Strategy and Decision-Making

01

**Data-Driven
Strategy**

02

**Improved
Agility**

03

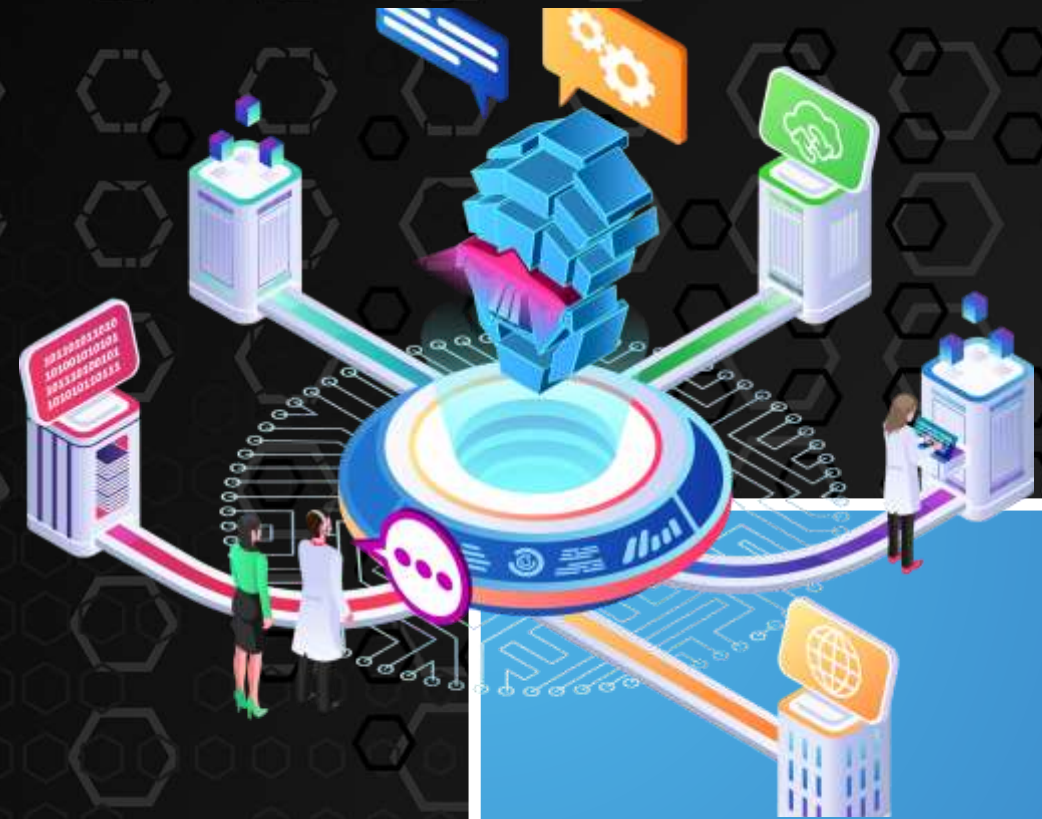
**Enhanced
Collaboration**

04

**Accountability
and
Transparency**

05

**Challenges and
Considerations**



Conclusion

Business Intelligence (BI) has evolved from a data-centric function to a strategic business driver. By understanding its history, architecture, and impact, organizations can harness its power to make informed decisions and achieve competitive advantage.



KNOWLEDGE CHECK

01

How can organizations leverage BI to achieve a sustainable competitive advantage? Discuss specific examples of BI-driven strategic initiatives.

02

Given the increasing reliance on data-driven decision making, discuss the ethical implications of BI. What are the potential biases and challenges, and how can organizations ensure ethical use of BI?





Thank You!

