



SNS COLLEGE OF TECHNOLOGY



(An Autonomous Institution)

COIMBATORE-35

Accredited by NBA-AICTE and Accredited by NAAC – UGC with A++ Grade
Approved by AICTE, New Delhi & Affiliated to Anna University, Chennai

UNIT IV: HUMAN DISEASES

TOPIC: **Treatment and prevention of diabetes**





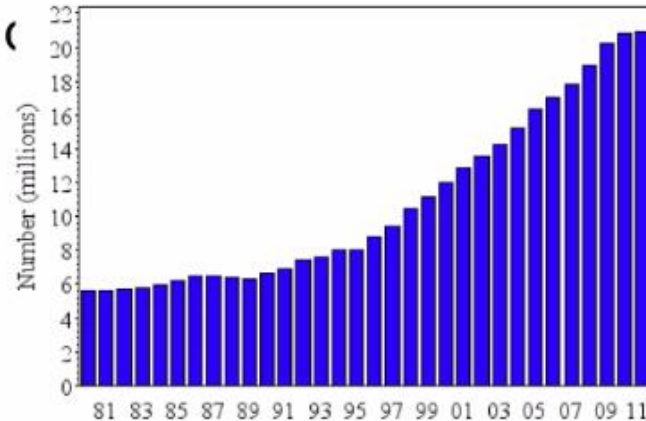
TOPIC OUTLINE





Why is diabetes prevention important?

- Davidson county diabetes rate was 12% in 2012
- Up from 9.9% in 2009
- 29.1 million people in the US or 9.3% of the population have diabetes (2014)
- 27.8% of people with c undiagnosed



CDC, 2015



Cost of Diabetes

- In 2012 diabetes cost the US \$245 billion, 41% more than in 2007
- People with diabetes spend \$7,900 annually on diabetes care alone (\$13,700 overall)
- 2.3 times more than those without diabetes



ADA 2015



Diabetes Complications

- Leading cause of blindness
- Leading cause of kidney failure
- Leading cause of amputations
- Major cause of heart attacks
- Major cause of strokes



Joslin Diabetes Center



What is Diabetes (Type 2)

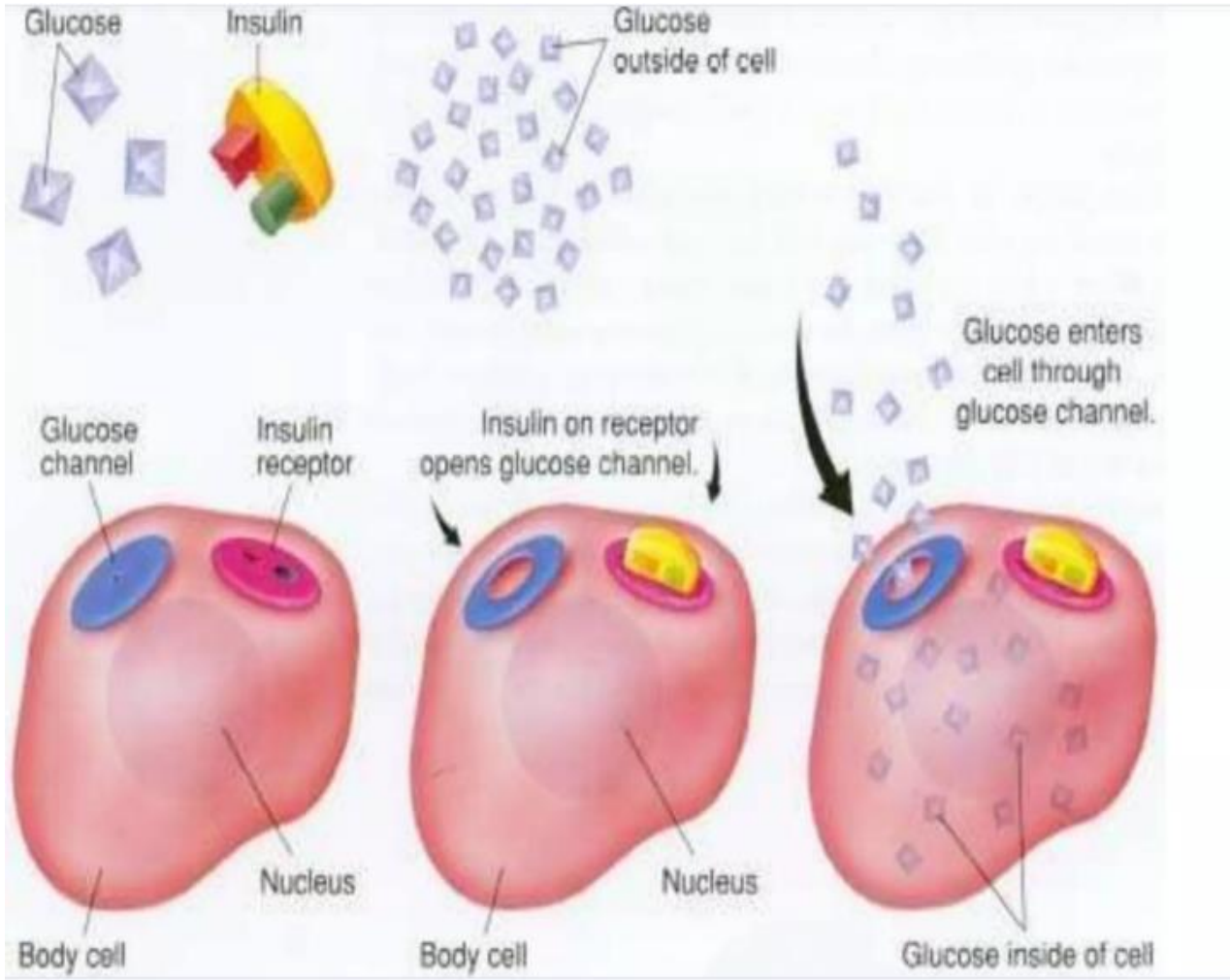
- ADA definition: a group of metabolic diseases characterized by hyperglycemia resulting from defects in insulin secretion, insulin action, or both. The chronic hyperglycemia of diabetes is associated with long-term damage, dysfunction, and failure of various organs, especially the eyes, kidneys, nerves, heart, and blood vessels.
- Type 2 diabetes, the most prevalent type (90-95%), is caused by a combination of resistance to insulin action and an inadequate insulin production.

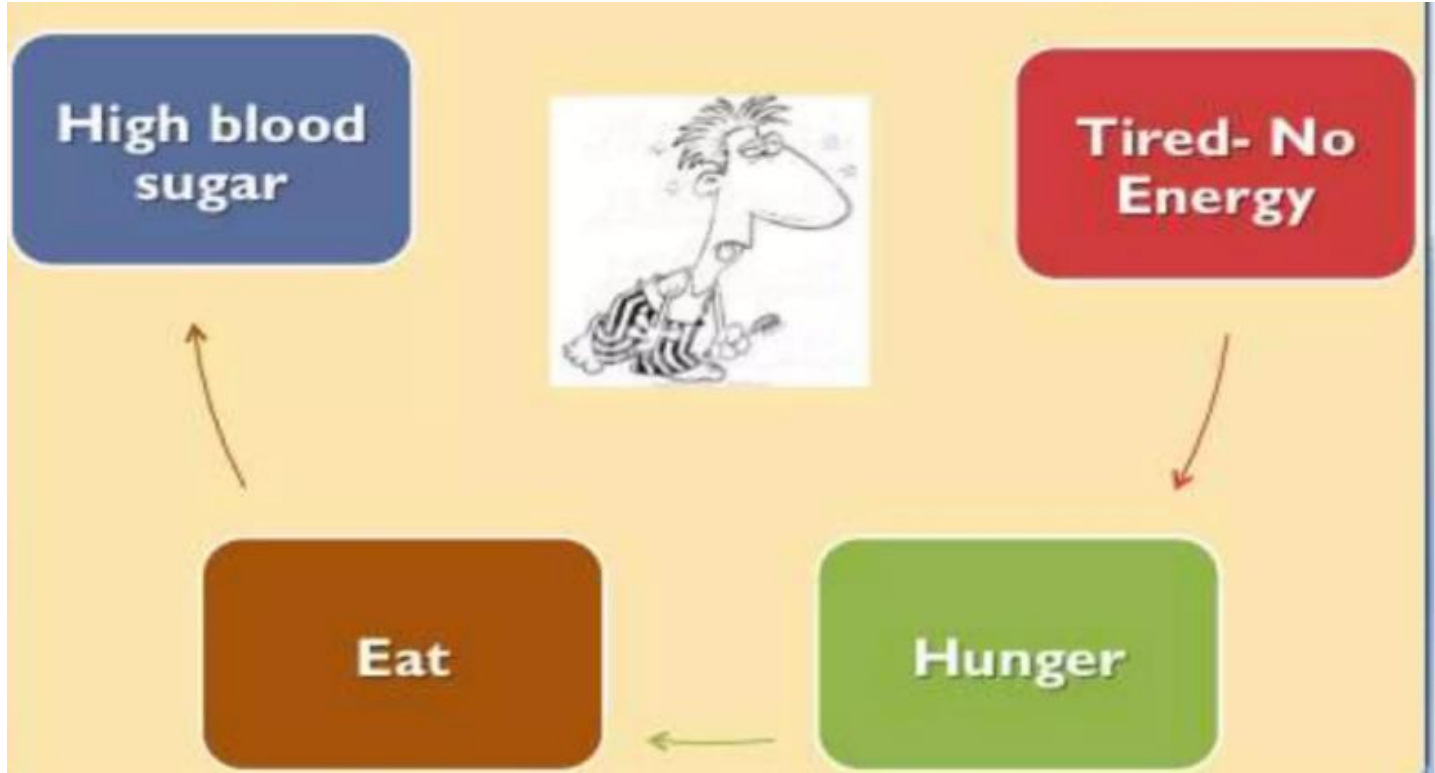


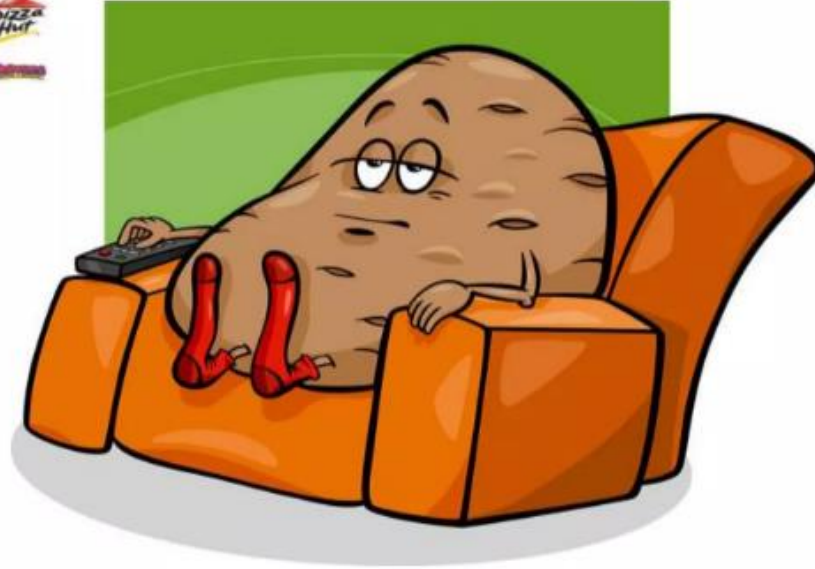
What is insulin?

- Insulin is a hormone produced by the pancreas
- The body breaks down food into glucose that our cells use for energy
- Insulin is produced when we eat in order to help glucose get into your body's cells











RECAP....



...THANK YOU