



SNS COLLEGE OF TECHNOLOGY



(An Autonomous Institution)



UNIT-V

Safety Organization



Safety Organization



An organization is the way in which authority is distributed to carry the work, the organization is represented by simple organization charts. Organization is not the end in itself it is the means to achieve the objective. The organization structure is built by considering the following:

1. Listing the essential activities.
2. Grouping and assigning activities to the group
3. Deciding line of authority delegation.
4. Co-ordination of the activities.



Safety Organization



- The safety organization will depend on the size and Complex of the plant for a large plant Safety Manager is usually appointed and he reports to the plant Manager.
- The safety manager's responsibilities are listed in the safety policy. The total plant has a line organization.
- The safety manager co-ordinates the safety activities in association with other line managers.
- During construction phase of the project the safety manager interacts with civil/erection/testing and commissioning/store managers and follows up safety requirements at various stages of the project.

A typical organization chart may look like Fig. 18.2.



Safety Organization

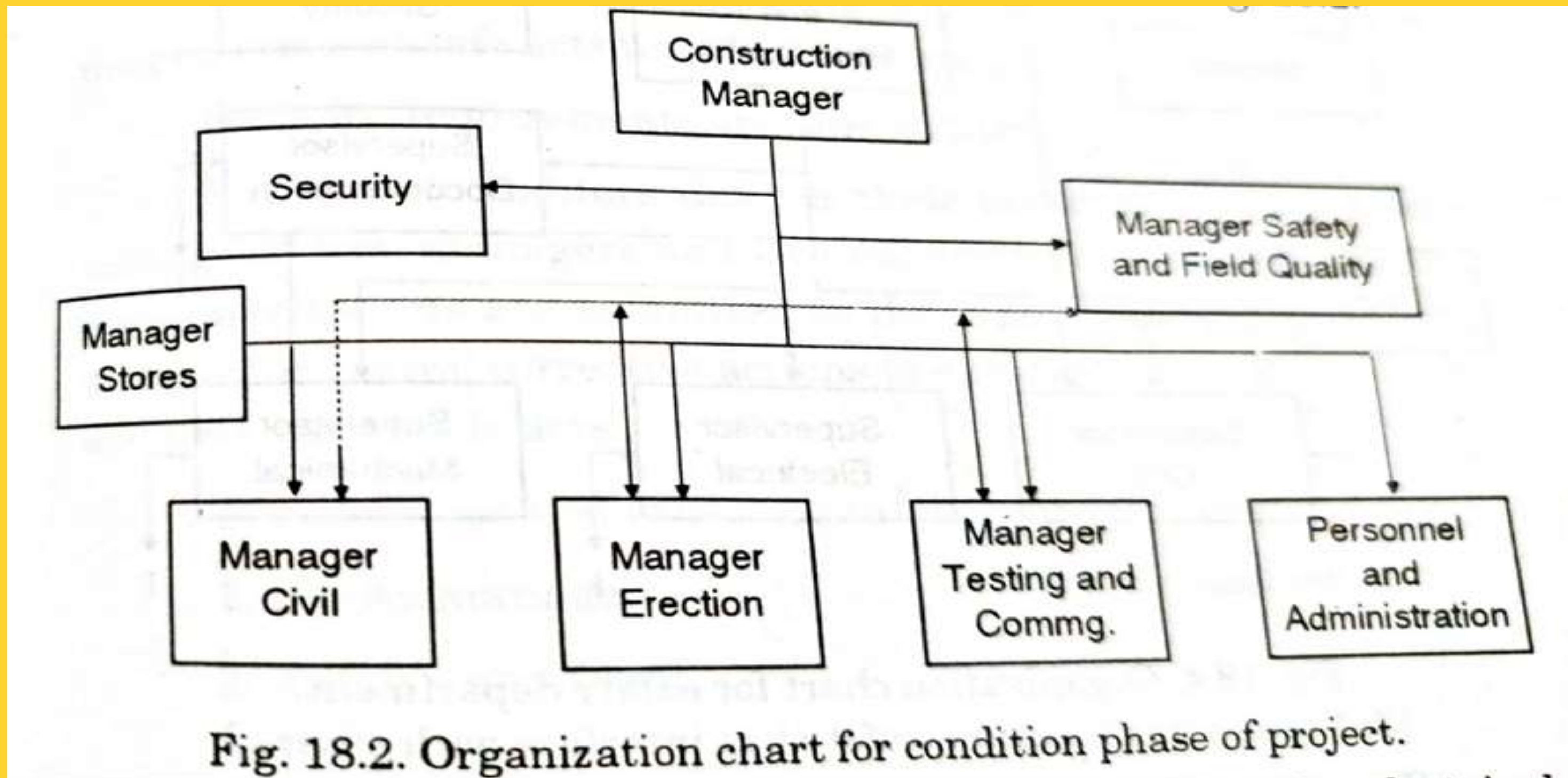


Fig. 18.2. Organization chart for condition phase of project.



Safety Organization



During operation and maintenance phase of the electrical plant safety manager may report to plant manager and may interact with various line managers as shown in Fig. 18.3.

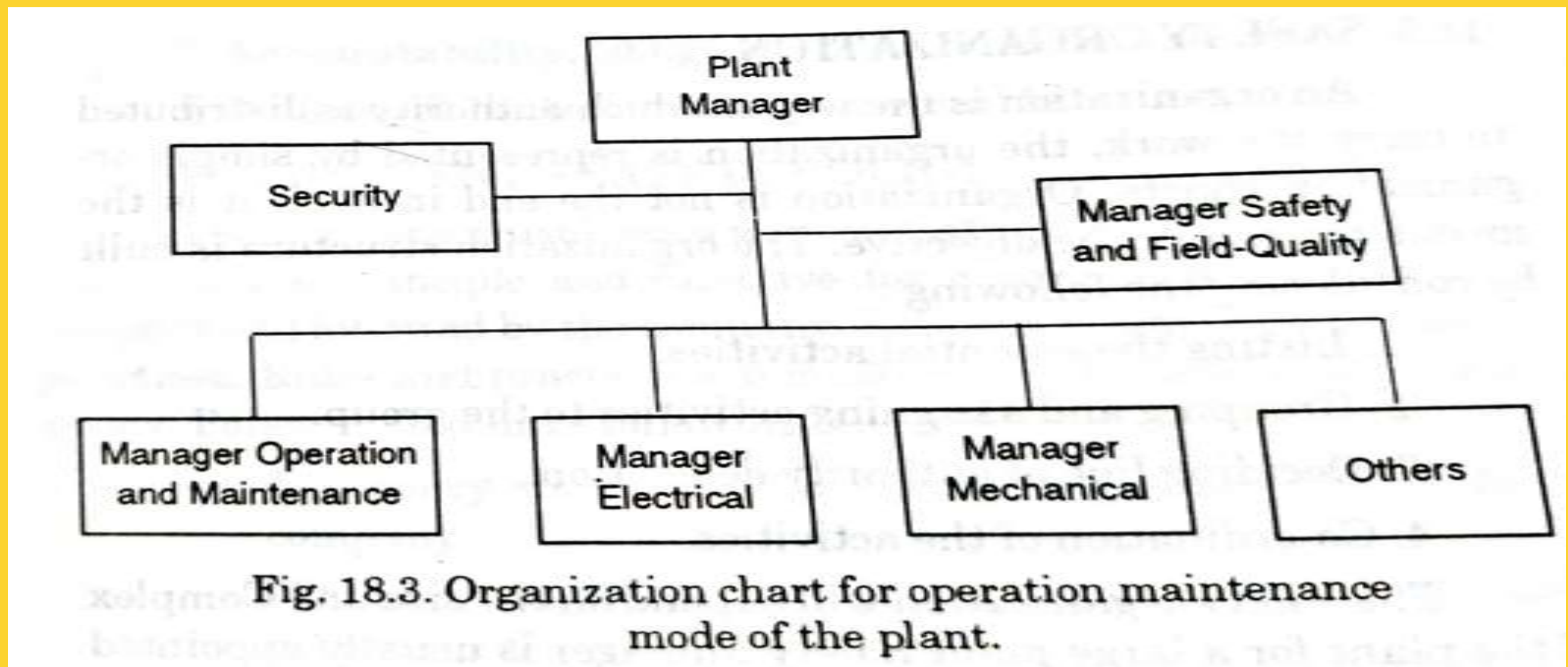


Fig. 18.3. Organization chart for operation maintenance mode of the plant.



Safety Organization

The safety department may be combined with field engineering and field quality department. The responsibilities of safety manager may include conducting safety audits, getting safety documents prepared, establishing safety procedures, eliminating unsafe conditions monitoring safety etc. organization of safety department may be as shown in Fig. 18.4.





Safety Organization

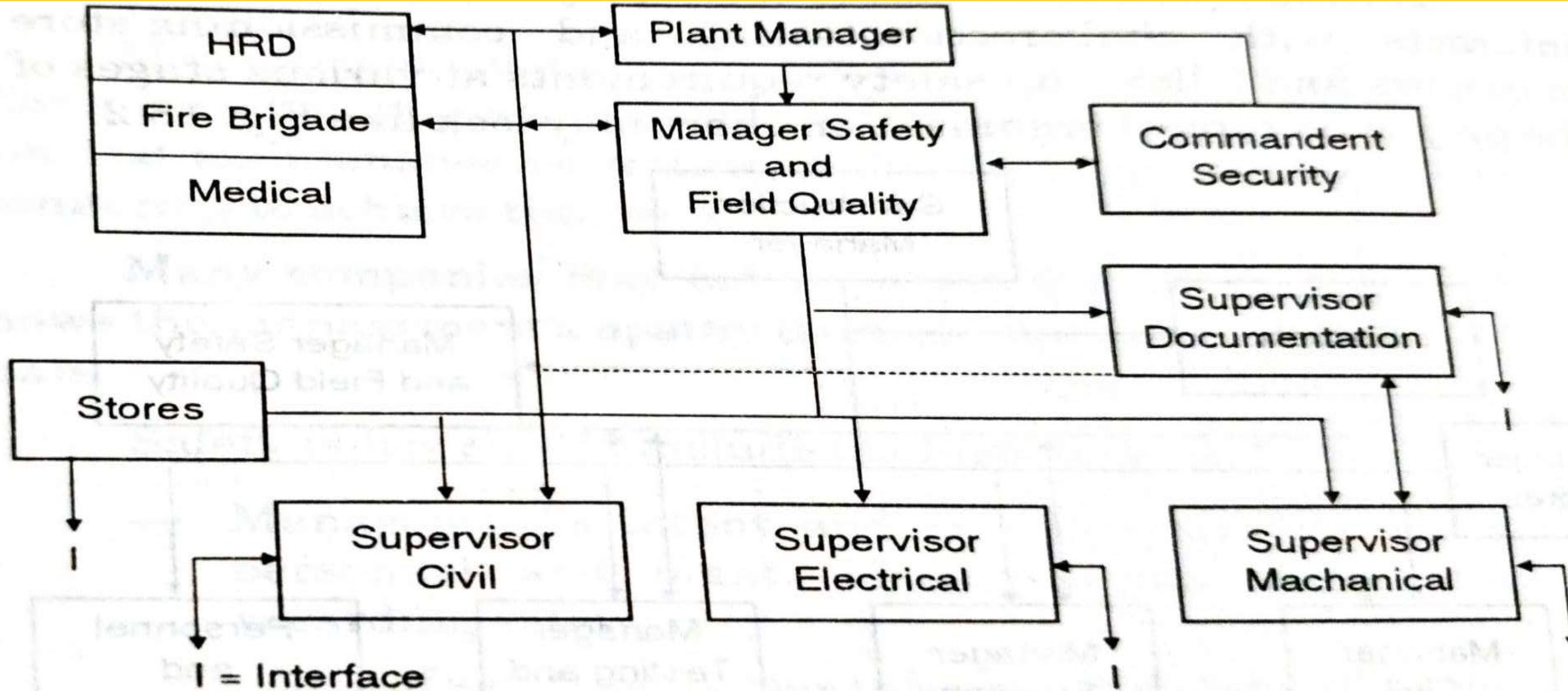


Fig. 18.4. Organization chart for safety department.
[Safety is a line function, safety has interface with others.]



Safety Organization



Supervisor/Forman is the most important person in the line organization. He monitors the functional line activities. He gives orders to workers. He checks the safety requirements. The safety department interacts with line managers and line supervisors



THANK YOU