



# SNS COLLEGE OF TECHNOLOGY



Coimbatore-36.

An Autonomous Institution

Accredited by NBA – AICTE and Accredited by NAAC – UGC with ‘A+’ Grade  
Approved by AICTE, New Delhi & Affiliated to Anna University, Chennai

**COURSE NAME :23IT101 C Programming and Data structures**

**I YEAR/ I SEMESTER**

**UNIT – II DECISIONS STATEMENTS AND FUNCTIONS**

**Topic:else if ladder**

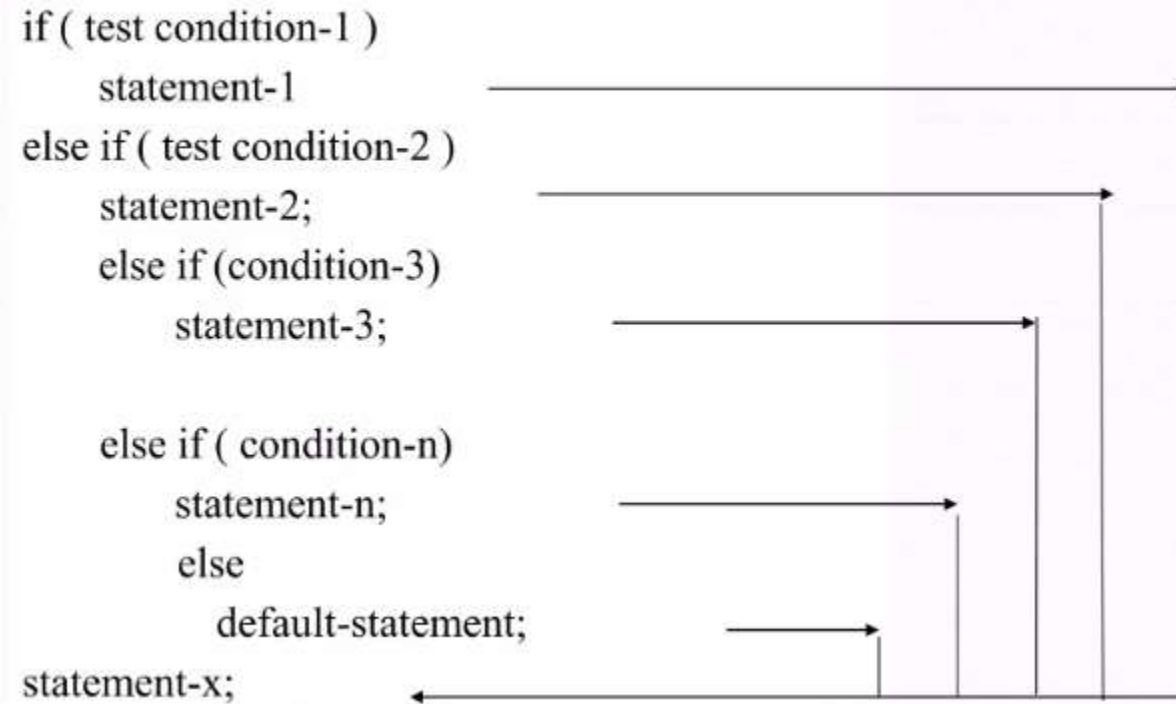
Mrs. R.ARUNA

Assistant Professor

Department of Computer Science and Engineering

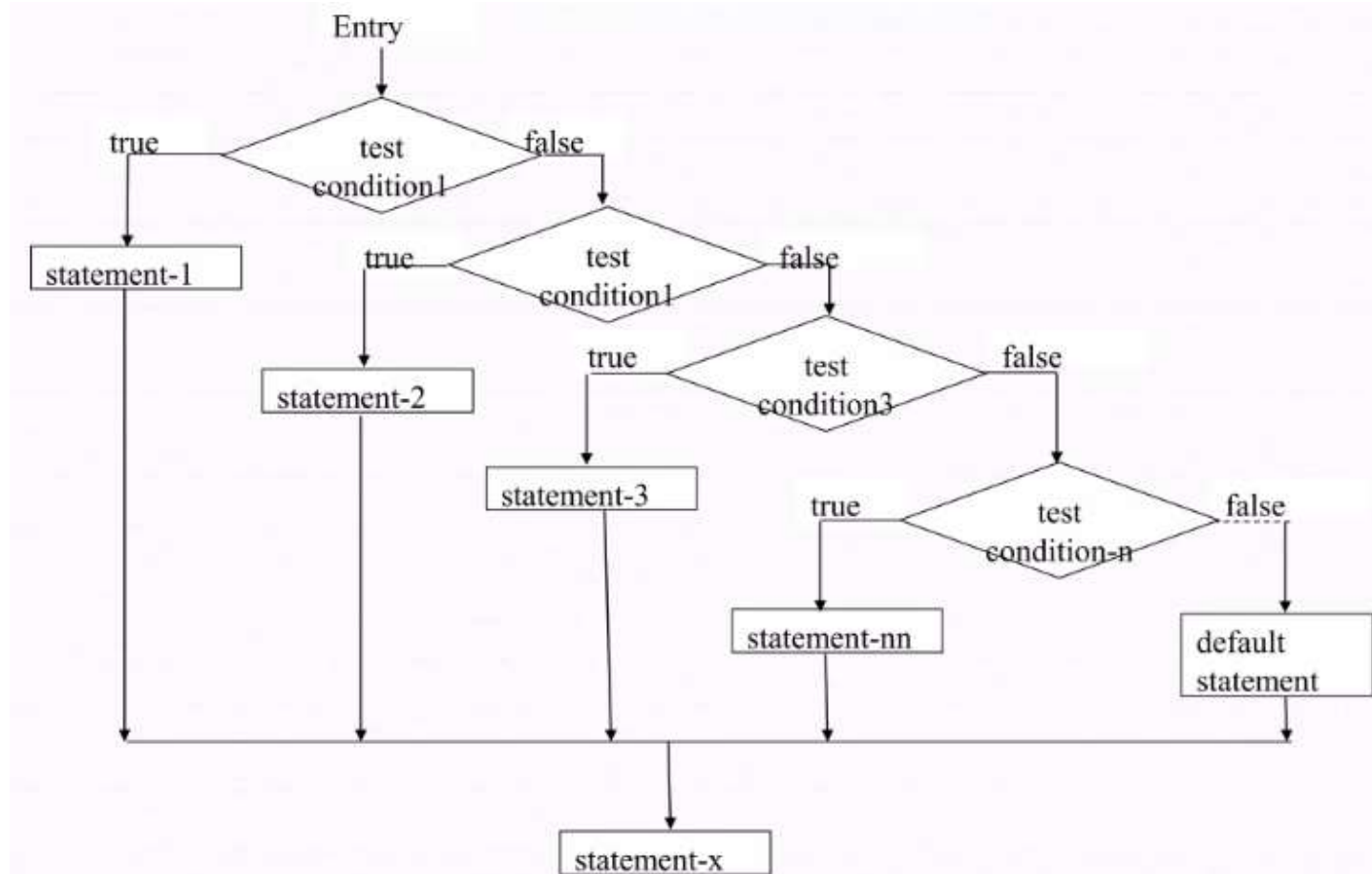


# syntax





# Else-if ladder flow chart





## Example:

```
// C program to illustrate nested-if statement
#include <stdio.h>

int main() {
    int i = 20;

    if (i == 10)
        printf("i is 10");
    else if (i == 15)
        printf("i is 15");
    else if (i == 20)
        printf("i is 20");
    else
        printf("i is not present");
}
```

**Output:**



```
#include <stdio.h>

int main() {

    double n1, n2, n3;

    printf("Enter three numbers: ");
    scanf("%lf %lf %lf", &n1, &n2, &n3);

    // if n1 is greater than both n2 and n3, n1 is the largest
    if (n1 >= n2 && n1 >= n3)
        printf("%.2lf is the largest number.", n1);

    // if n2 is greater than both n1 and n3, n2 is the largest
    else if (n2 >= n1 && n2 >= n3)
        printf("%.2lf is the largest number.", n2);

    // if both above conditions are false, n3 is the largest
    else
        printf("%.2lf is the largest number.", n3);

    return 0;
}
```