



**SNS COLLEGE OF TECHNOLOGY, COIMBATORE-35**

**(AN AUTONOMOUS INSTITUTION)**



**DEPARTMENT OF COMPUTER SCIENCE AND ENGINEERING**

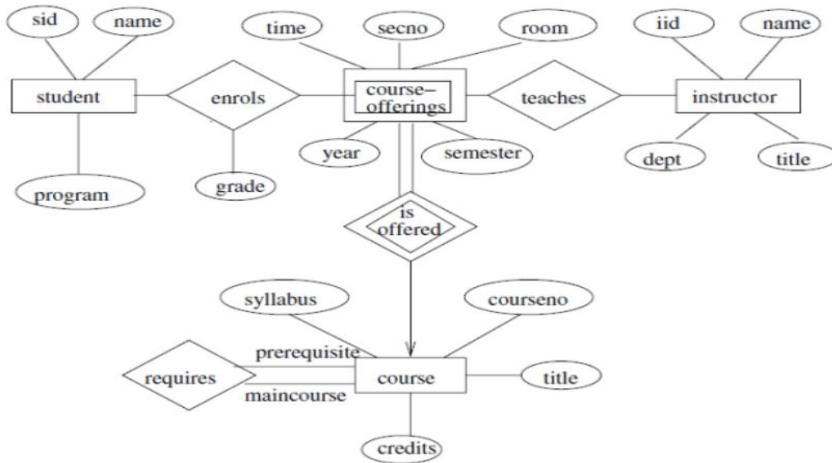
**23CST201-Database Management Systems**

## **UNIT-I**

### **Introduction**

1. Construct an E-R diagram for a car-insurance company whose customers own one or more cars each. Each car has associated with it zero to any number of recorded accidents.

Answer :

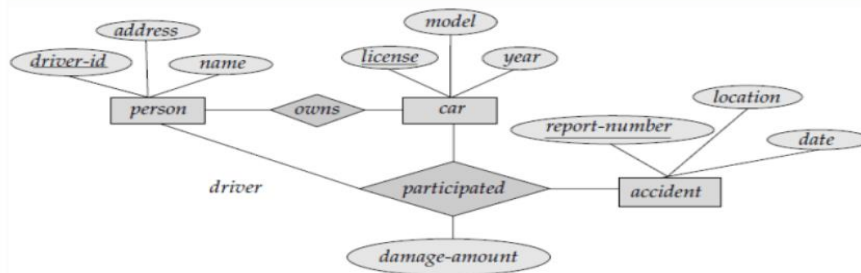


E-R diagram for a university.

3:

(a) Construct an E-R diagram for a car-insurance company whose customers own one or more cars each. Each car has associated with it zero to any number of recorded accidents.

Answer :



E-R diagram for a Car-insurance company.

(b) Construct appropriate tables for the above ER Diagram ?