



SNS COLLEGE OF TECHNOLOGY

Coimbatore-35

An Autonomous Institution

Accredited by NBA – AICTE and Accredited by NAAC – UGC with 'A+'
Grade

Approved by AICTE, New Delhi & Affiliated to Anna University,
Chennai



DEPARTMENT OF ELECTRONICS & COMMUNICATION ENGINEERING

19ECE308- WIRELESS TECHNOLOGIES FOR IOT

UNITII ARCHITECTURE AND DESIGN PRINCIPLES FOR IOT

TOPIC 8 –Application layer protocols: TELNET & Ports



TELNET Protocol

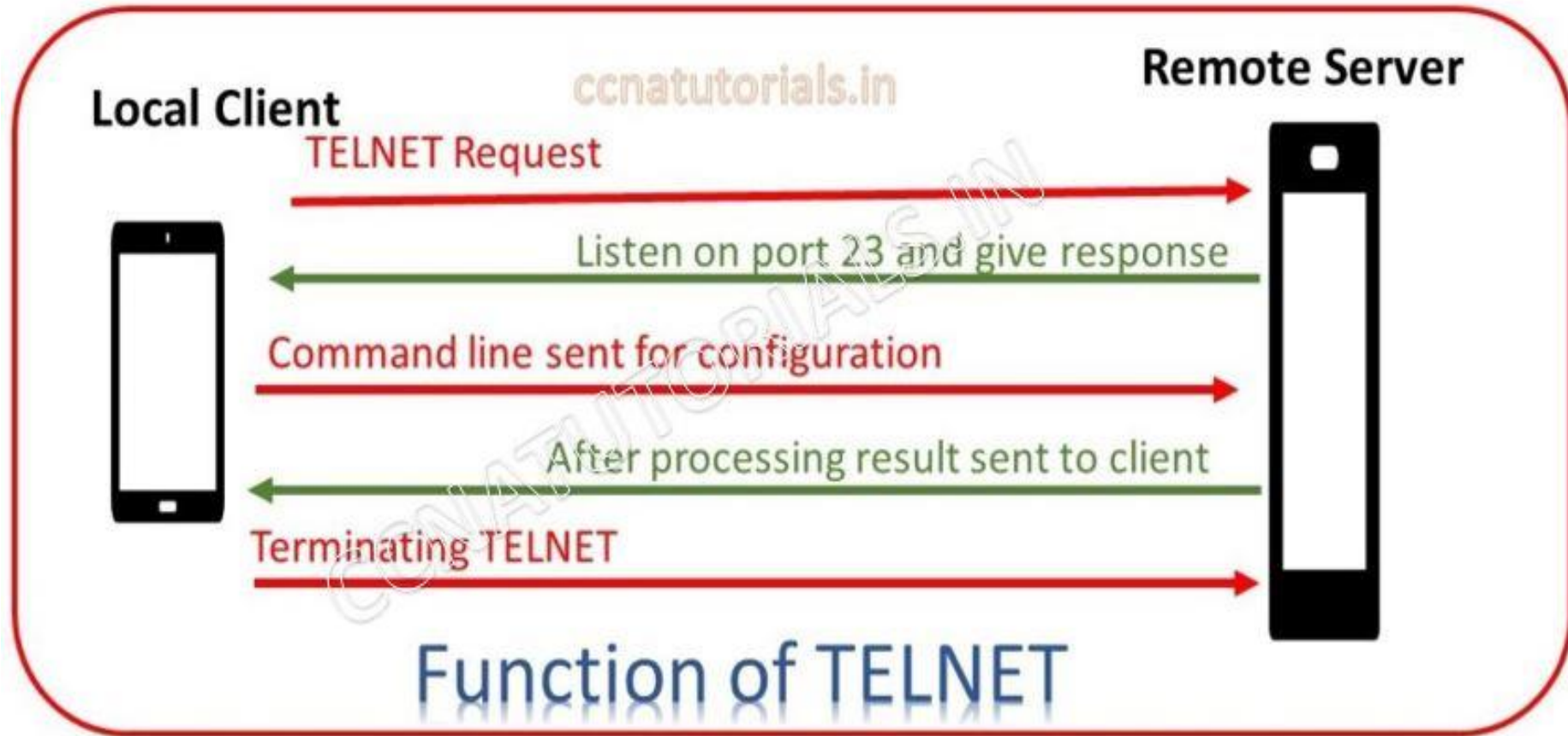
TELNET stands for **Teletype Network**. It is a type of protocol that enables one computer to connect to the local computer. It is used as a standard TCP/IP protocol for virtual terminal service which is provided by ISO. The computer which starts the connection is known as the local computer.

The computer which is being connected to i.e. which accepts the connection known as the remote computer.

Telnet operates on a client/server principle. The local computer uses a telnet client program and the remote computers use a telnet server program.

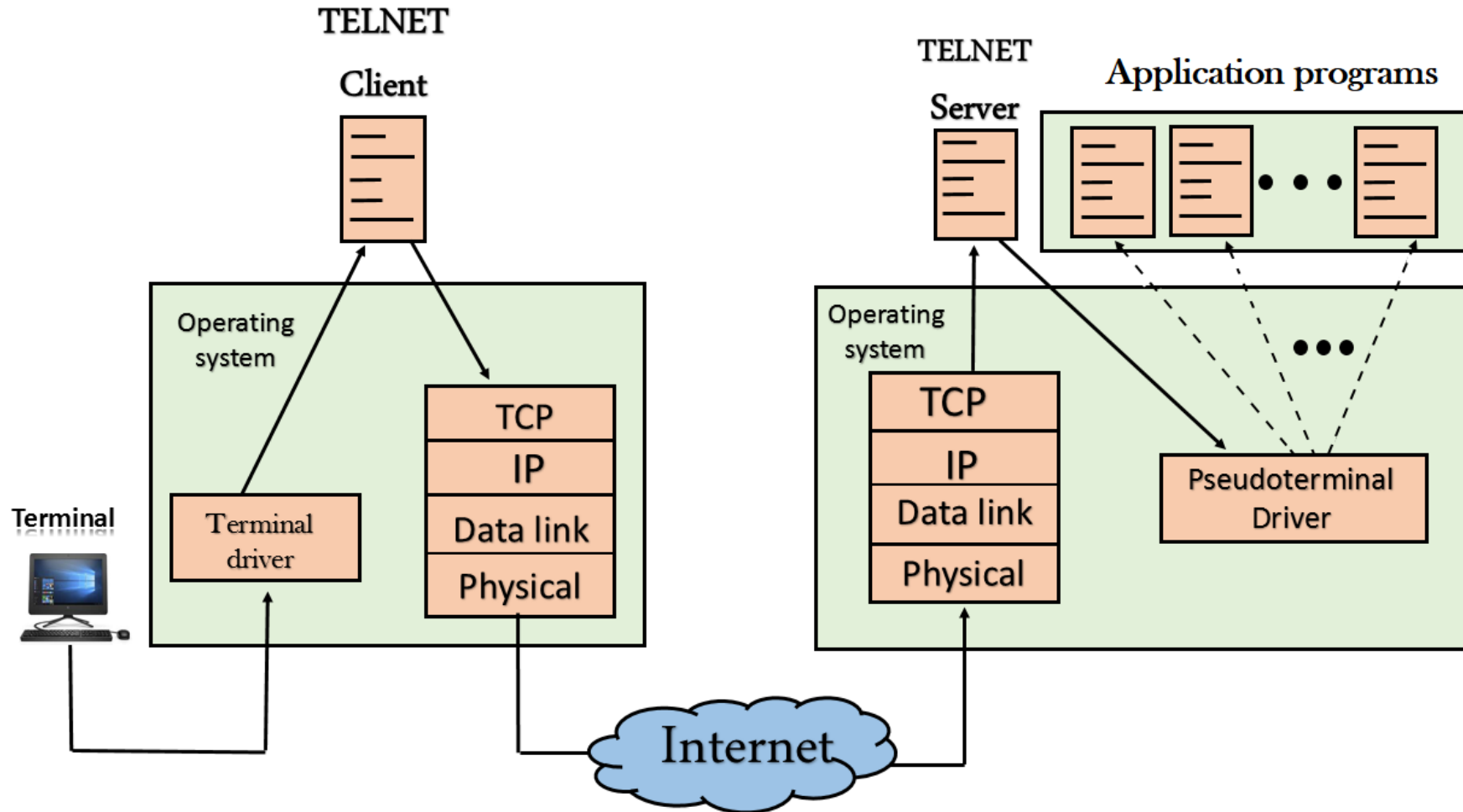


Functions of TELNET



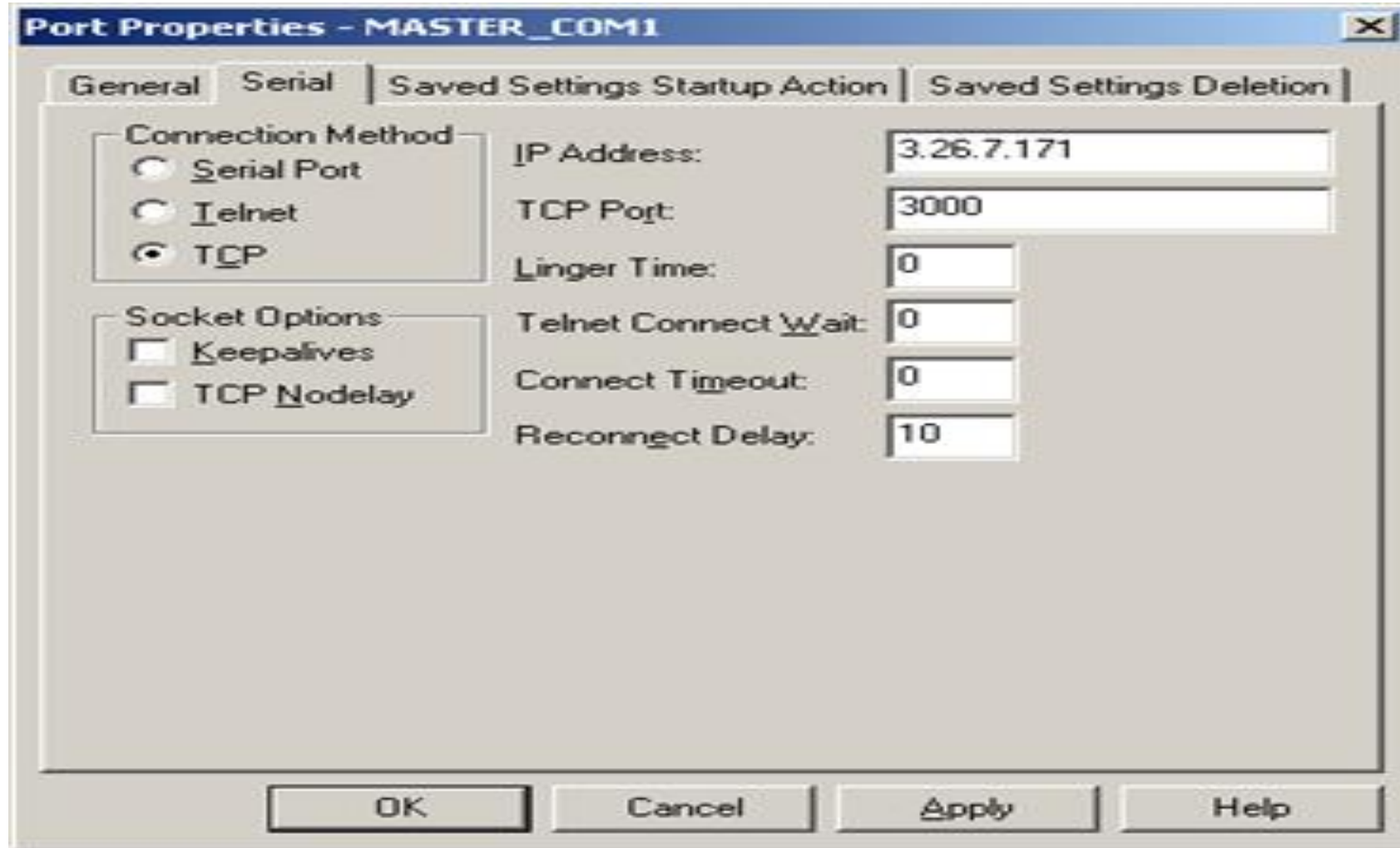


TELNET Terminal Network



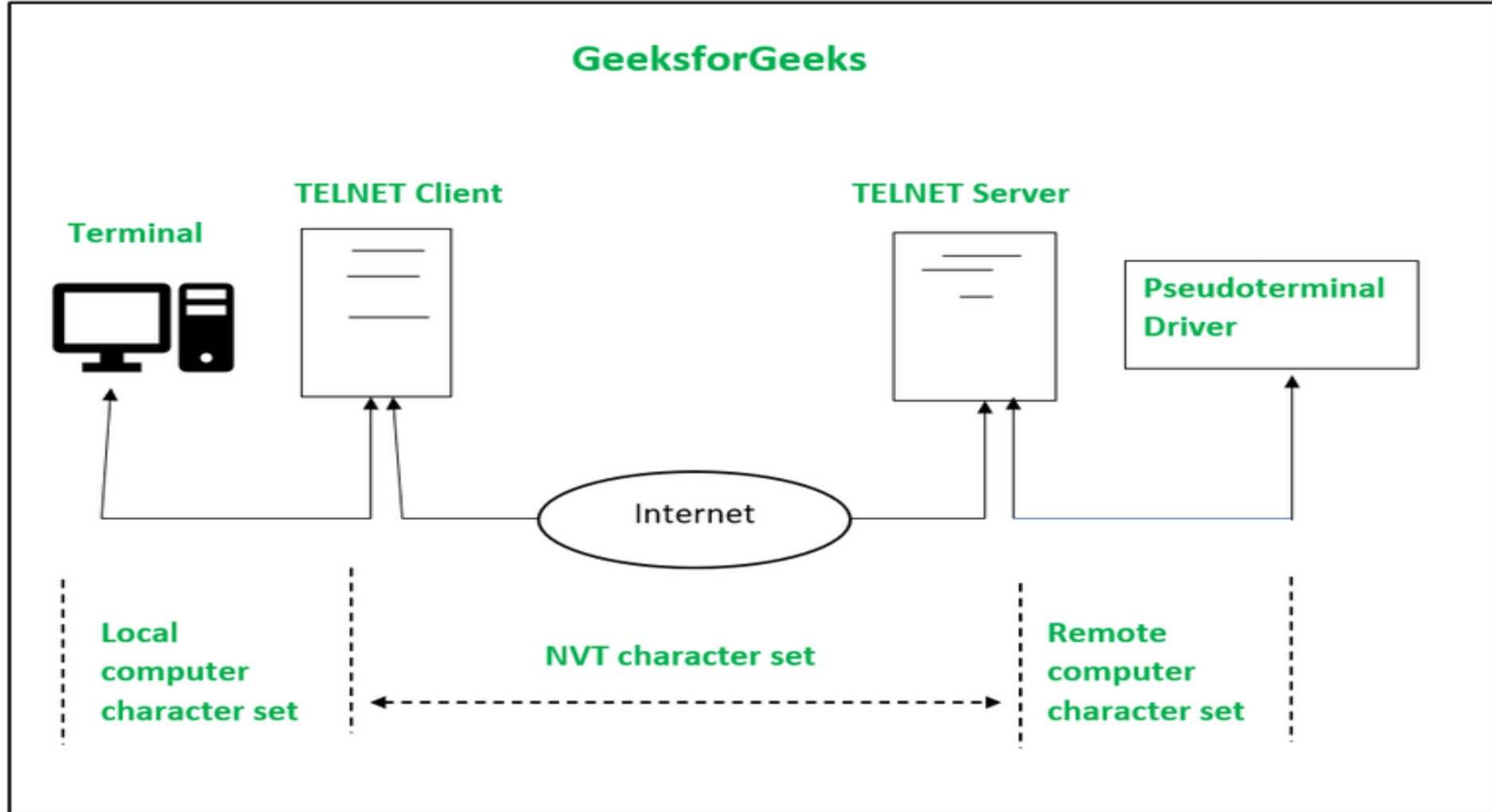


TELNET PORTS





Network Virtual Terminal



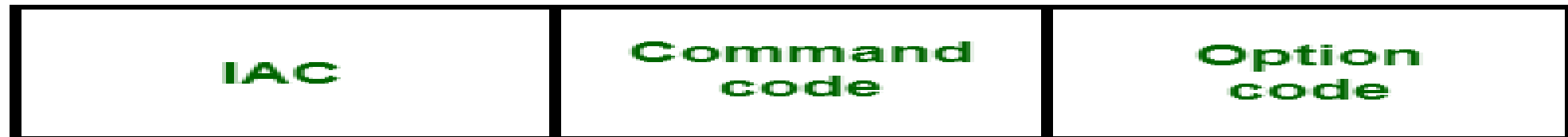


TELNET Commands



Commands of Telnet are identified by a prefix character, Interpret As Command (IAC) with code 255. IAC is followed by command and option codes.

The basic format of the command is as shown in the following figure





TELNET Commands

Following are some of the important TELNET commands

character	Decimal	Binary	Meaning
WILL	251	11111011	<ol style="list-style-type: none">1. Offering to enable.2. Accepting a request to enable.
WON'T	252	11111100	<ol style="list-style-type: none">1. Rejecting a request to enable.2. Offering to disable.3. Accepting a request to disable.
DO	253	11111101`	<ol style="list-style-type: none">1. Approving a request to enable.2. Requesting to enable.



Assesment



. _____ allows you to connect and login to a remote computer

- a) Telnet
- b) FTP
- c) HTTP
- d) SMTP

Answer: a

Explanation:

Telnet provides access to the command-line interface on a remote computer. One can login to the computer from the command-line interface.



Thank You