



SNS COLLEGE OF TECHNOLOGY

(An Autonomous Institution)

COIMBATORE-35

Accredited by NBA-AICTE and Accredited by NAAC – UGC with A+ +Grade

Approved by AICTE, New Delhi & Affiliated to Anna University, Chennai



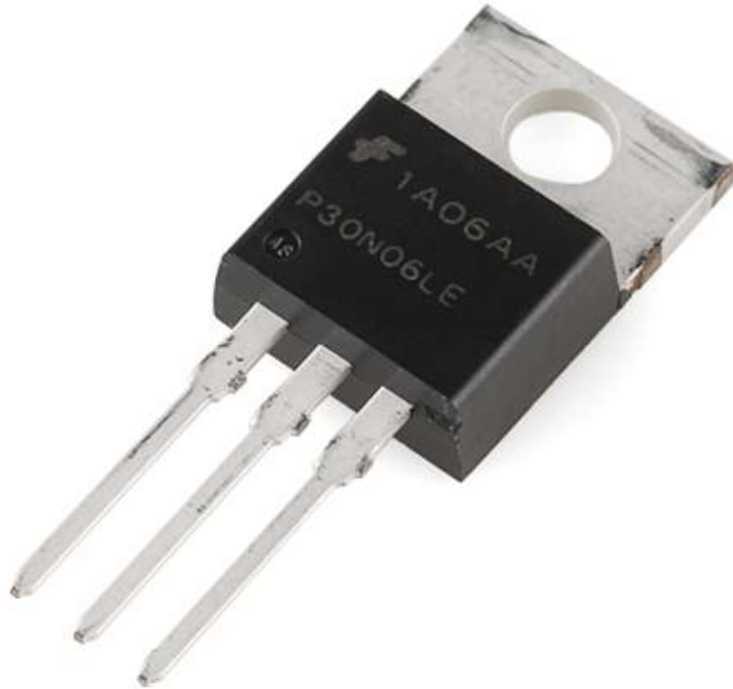
23EET104 / ANALOG ELECTRONICS CIRCUITS I YEAR / II SEMESTER

UNIT-II: MULTI JUNCTION DEVICES

MOSFET



TOPIC OUTLINE



- ✓ Introduction
- ✓ Working principle
- ✓ VI characteristics
- ✓ Applications



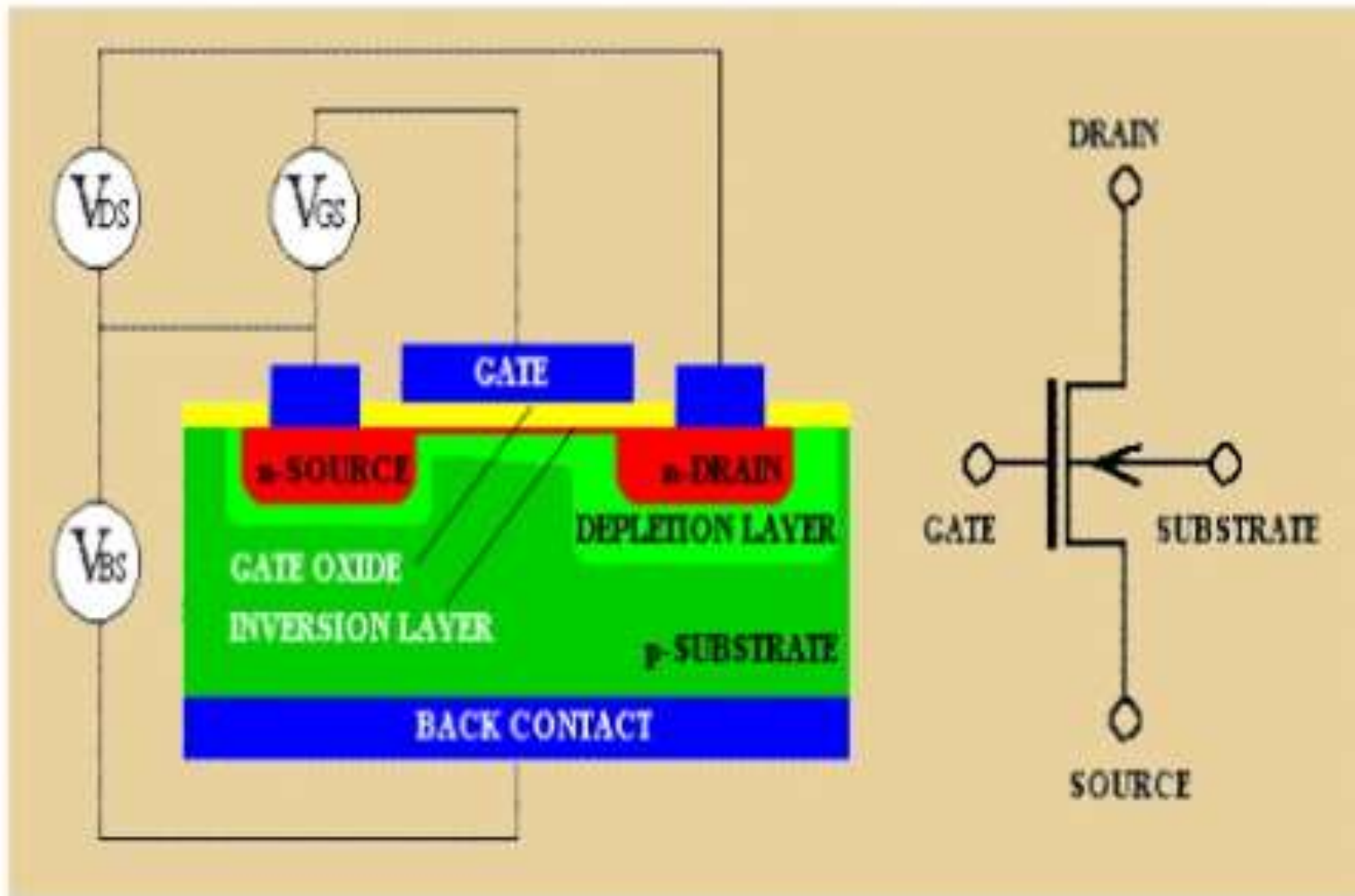
Introduction



A MOSFET is a four-terminal device having source(S), gate (G), drain (D) and body (B) terminals. In general, The body of the MOSFET is in connection with the source terminal thus forming a three-terminal device such as a field-effect transistor. MOSFET is generally considered as a transistor and employed in both the analog and digital circuits. This is the basic introduction to MOSFET

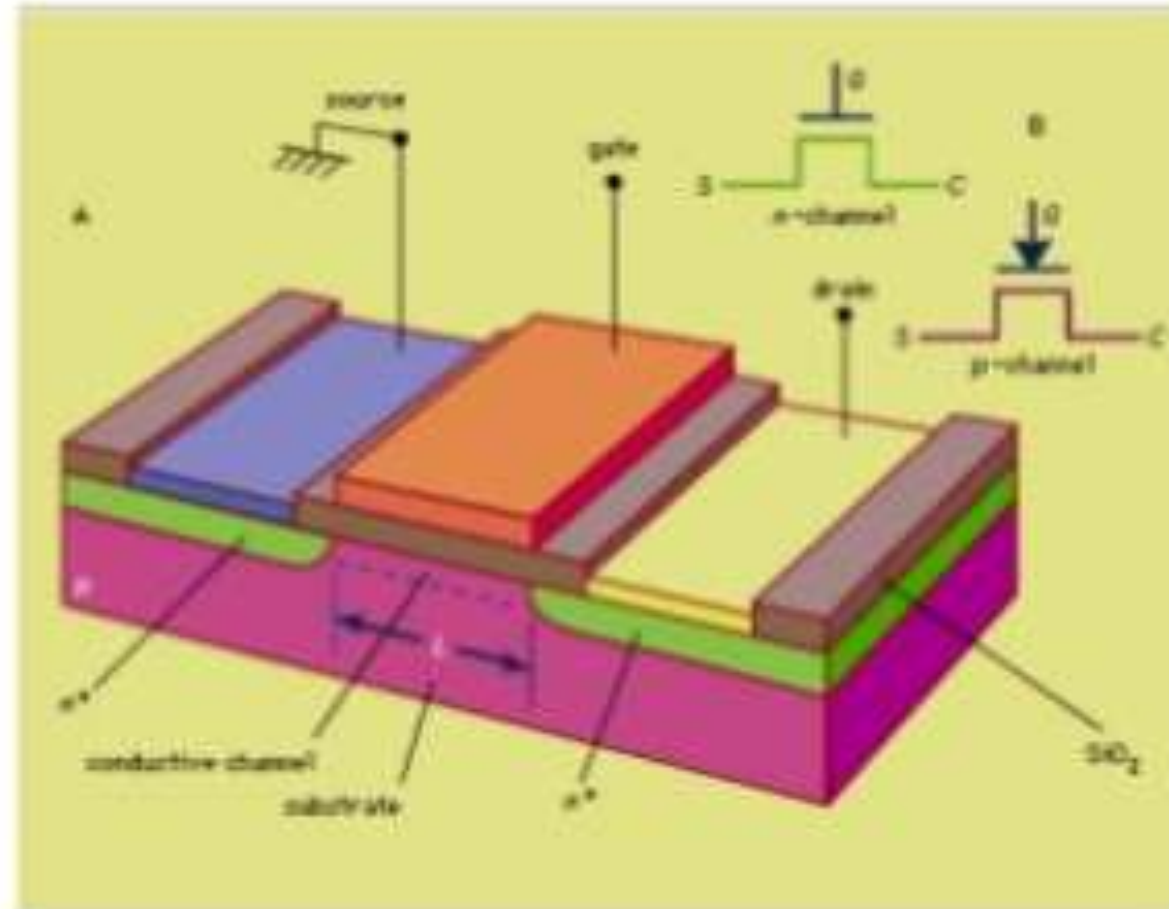


Symbol



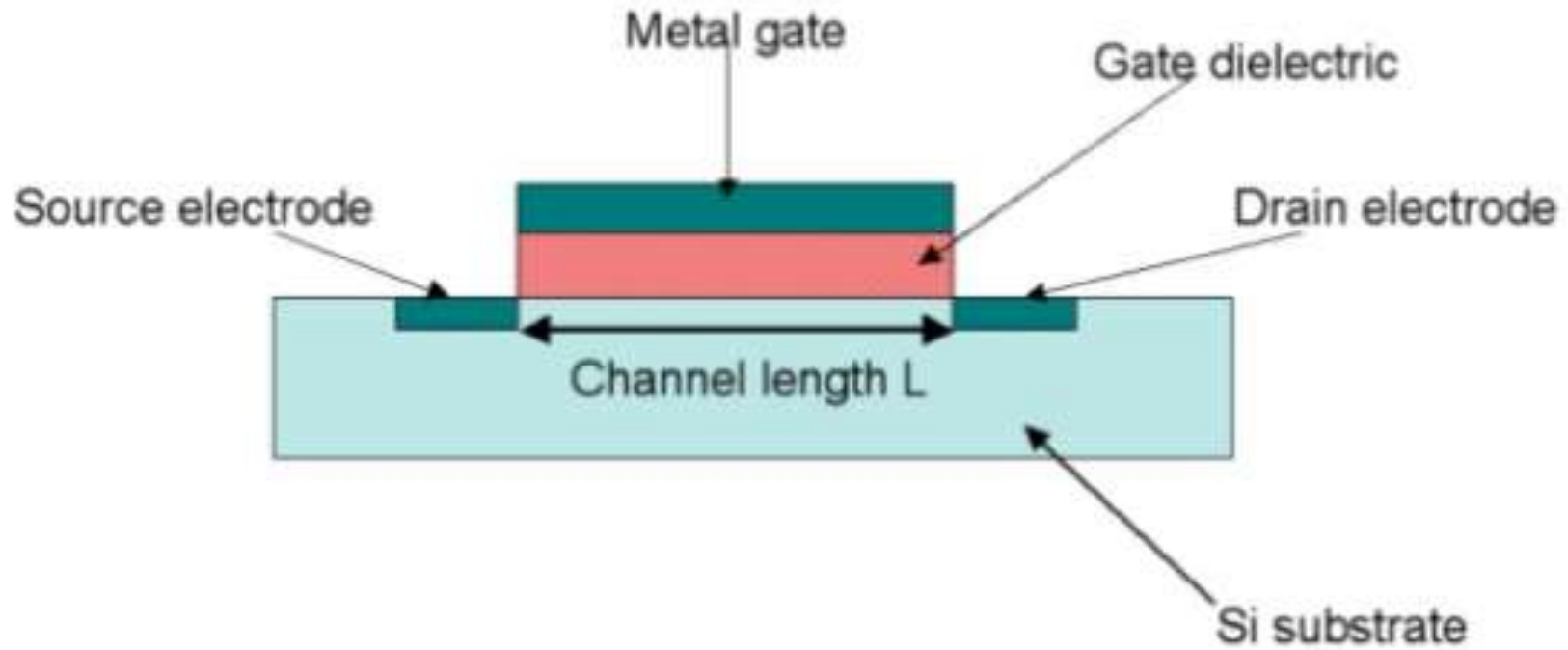


Structure



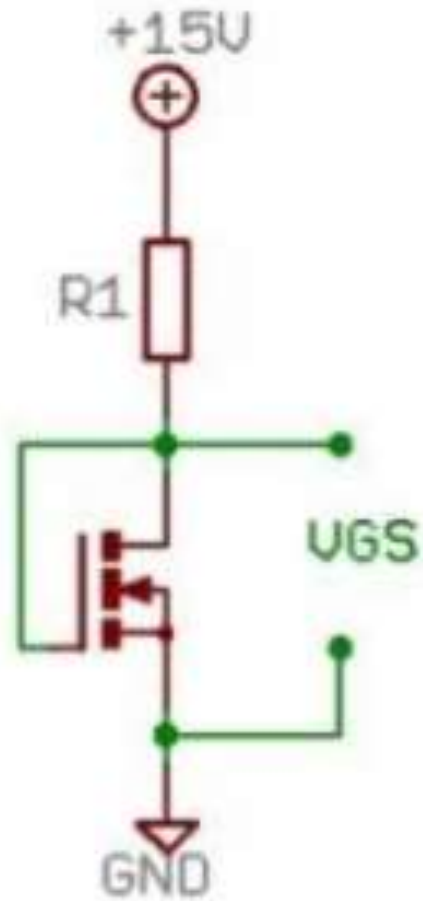


Structure

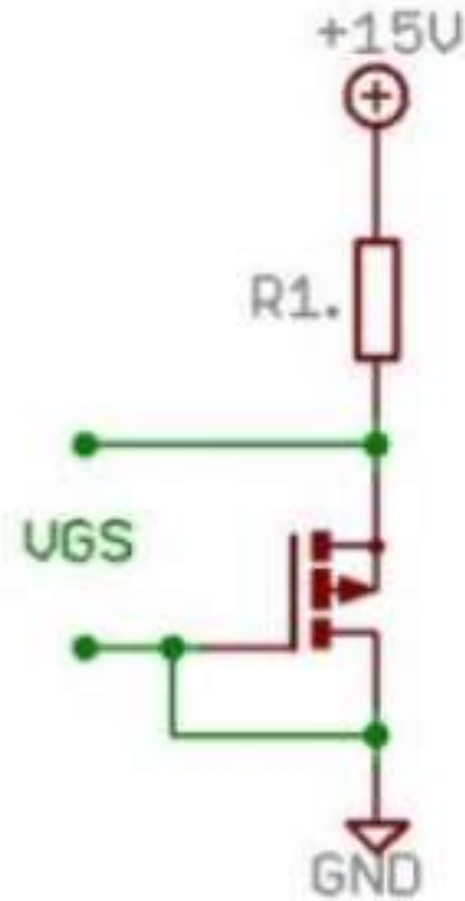




P and N channel MOSFET



N-CHANNEL

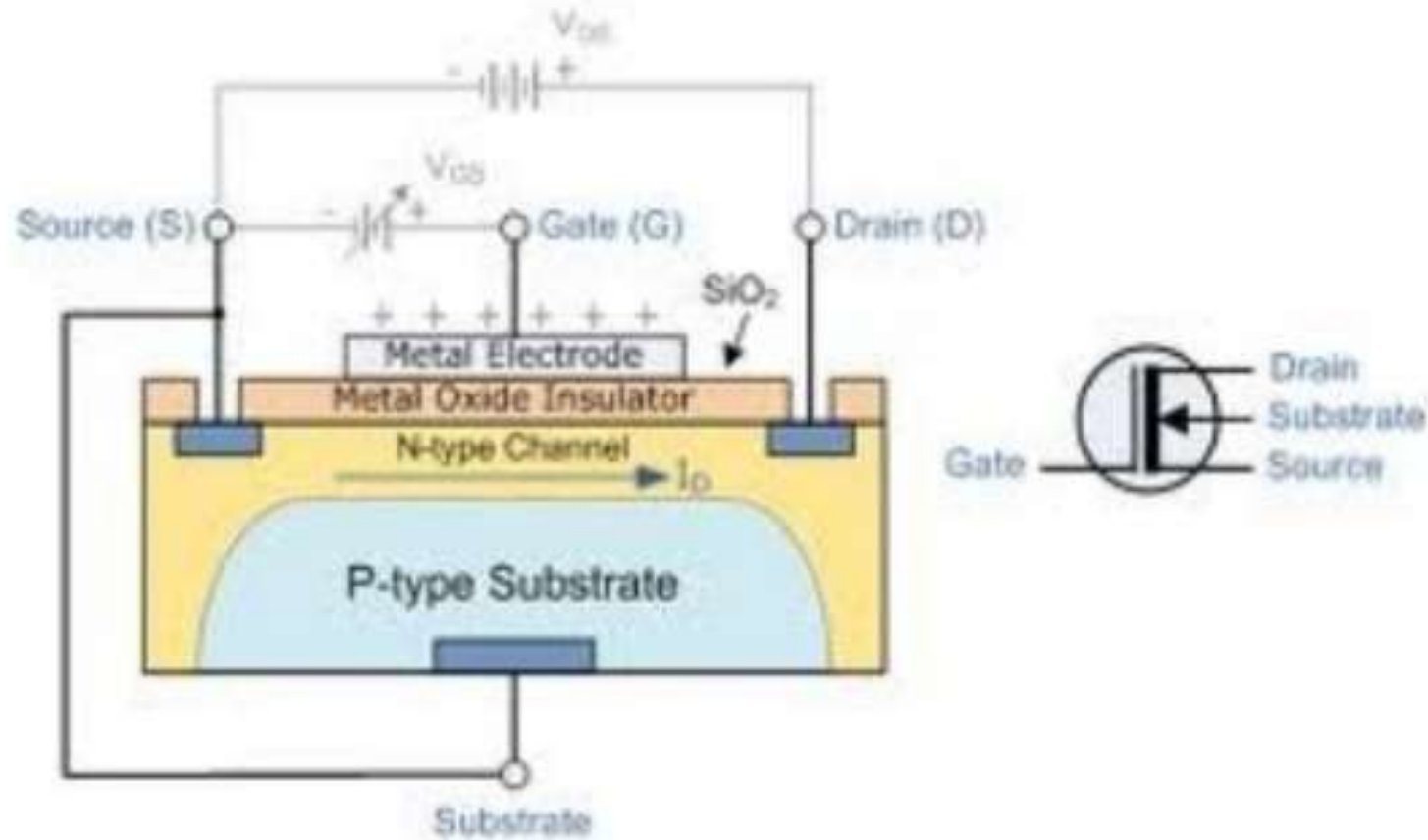


P-CHANNEL



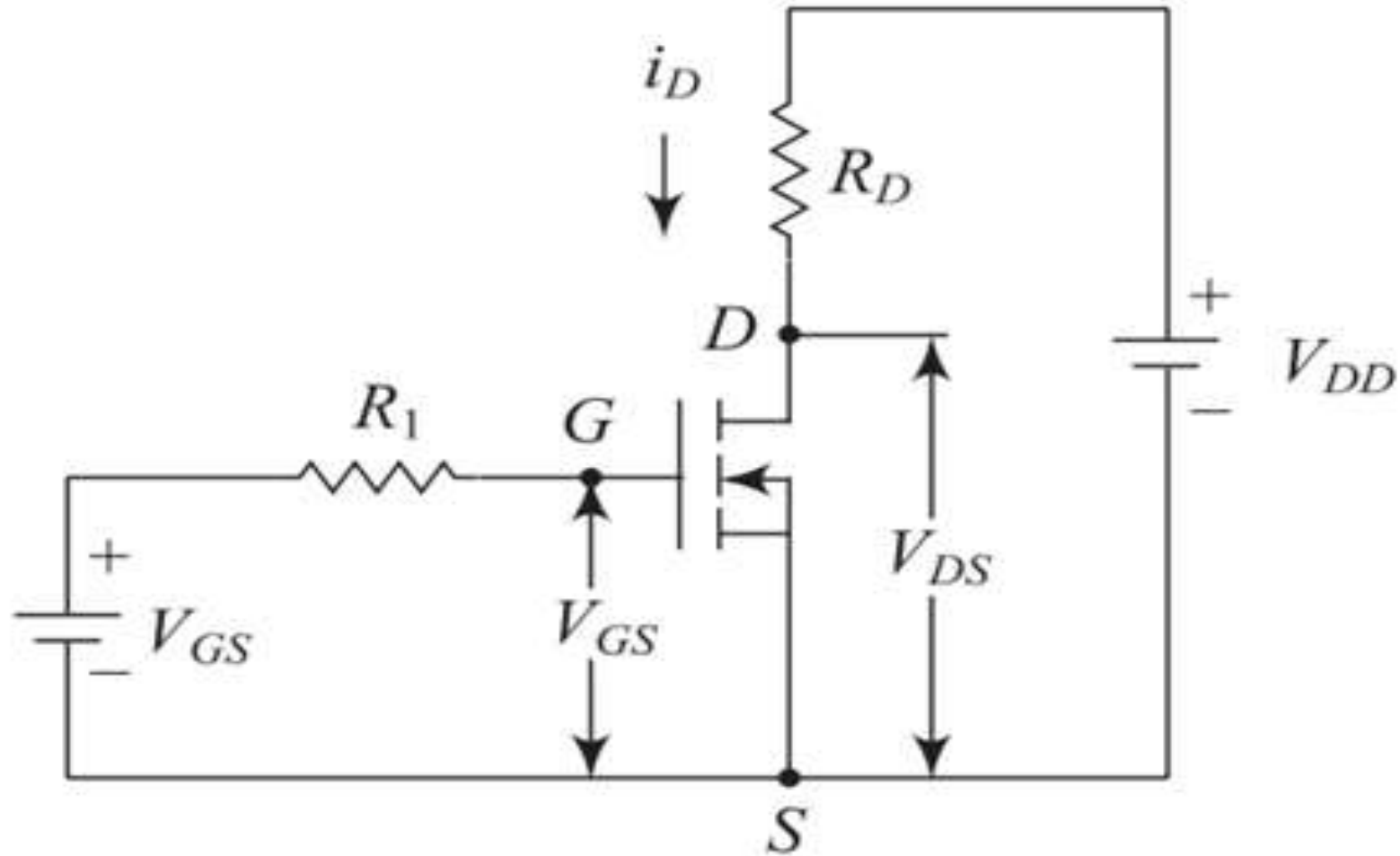


Working Animation





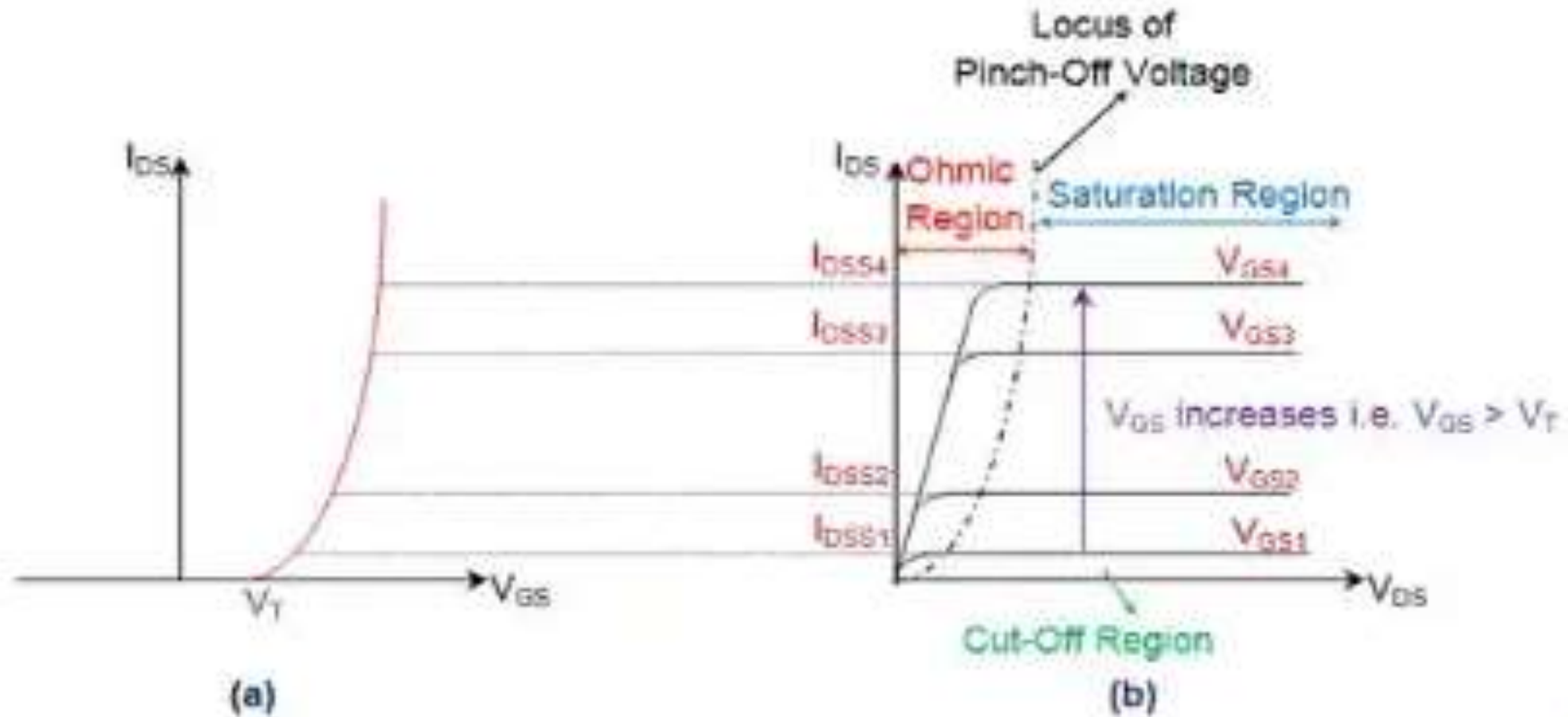
VI Characteristics – Circuit Diagram



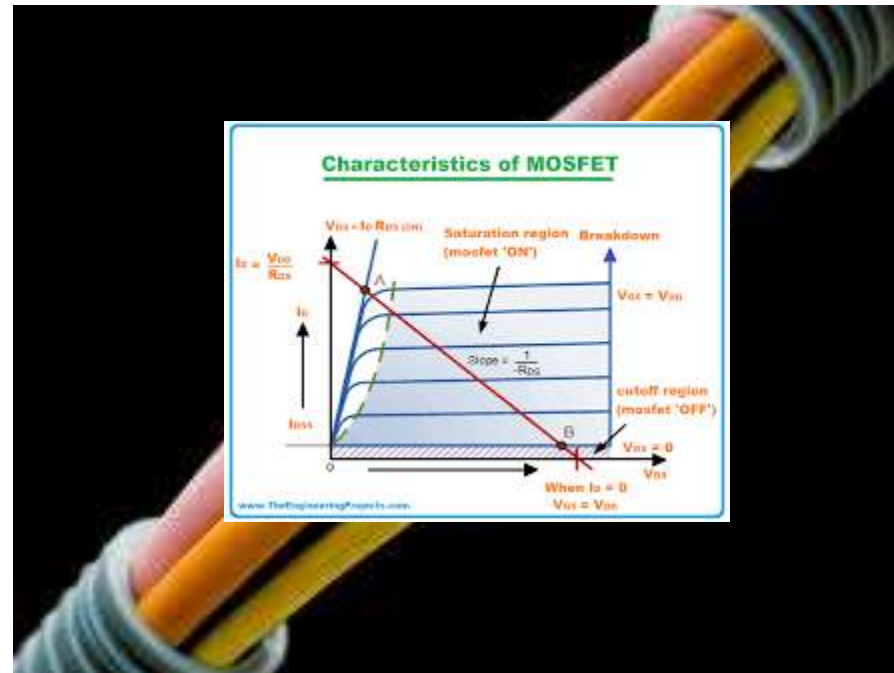


VI Characteristics – MOSFET

Transfer Characteristics And Output Characteristics



RECAP...



...THANK YOU